



Lincoln  
Human  
Resource  
Management  
Association

CHAPTER 0048

2011

**MEMBERSHIP  
DIRECTORY**

AFFILIATE OF



SOCIETY FOR HUMAN  
RESOURCE MANAGEMENT

# TABLE OF CONTENTS

---

LHRMA / SHRM Quick Reference Guide .....	2
2011 LHRMA Programs .....	3
What is LHRMA? .....	4
Nebraska SHRM State Council .....	5
What is SHRM? .....	9
LHRMA Code of Ethics .....	10
2011 Organizational Chart .....	11
LHRMA Board Members and Officers .....	13
Membership Roster by Individual .....	14
Membership Roster by Company Affiliation .....	44
2009 Student Chapters .....	55
LHRMA Past Presidents .....	56
LHRMA Honorary Life Memberships .....	56
LHRMA Constitution and By-Laws .....	57

This directory contains proprietary information and must not be used for solicitation purposes. It must not be disclosed, reproduced, distributed to, or used by any individual, organization, or entity that is not affiliated with LHRMA without the prior express written consent of LHRMA.

# **LHRMA / SHRM**

## **Quick Reference Guide**

---

### **LHRMA**

#### **Lincoln Human Resource Management Association**

Chapter No. 0048  
PO Box 81066  
Lincoln, NE 68501-1066  
[www.lincolnhnr.org](http://www.lincolnhnr.org)

Membership Services  
[info@lincolnhnr.org](mailto:info@lincolnhnr.org)

(To report changes to directory information  
or other general inquiries)

### **SHRM**

#### **Society for Human Resource Management**

1800 Duke Street  
Alexandria, VA 22314-3499

Member Services Line and Information Center  
800/283-SHRM  
Phone 703.548.3440 • FAX 703.836.0367  
[shrm@shrm.org](mailto:shrm@shrm.org)  
<http://www.shrm.org>

# 2011 LHRMA PROGRAMS

---

Meetings and/or workshops are normally held on the second Tuesday of each month. Meeting information and topics will be announced in the monthly LHRMA newsletter and are listed on the LHRMA website at:

**[www.lincolnhnr.org](http://www.lincolnhnr.org)**

## **SPECIAL MEETING INFORMATION BY MONTH:**

- **February** – Student Chapter sponsored meeting (UNL, Doane, & Wesleyan)
- **March** – Duad meeting with ASTD
- **September** – NO MONTHLY MEETING (SHRM State Conference)
- **October** –Past President's Banquet
- **November** – Annual election of Board members; Recognition of volunteers and committee work
- **December** – Social meeting

The registration deadline is by **NOON** on the Friday ***before*** the meeting. Any member planning to attend must register in advance.

## **Registration Options:**

1. Members that receive email notification of upcoming meetings and workshops can register by going to the website [www.lincolnhnr.org](http://www.lincolnhnr.org)
2. and click on the “register now” button. If more than one person from an organization is registering, you can indicate that in the comments section. Be sure to indicate if someone is a guest.
3. Register via email by sending a message to: [lhrma0048@yahoo.com](mailto:lhrma0048@yahoo.com)
- 4.
5. Guests/Non-Members may attend any monthly meeting at a higher Guest/Non-Member rate.

There is a \$10.00 fee for not registering by the deadline and for no-shows. This \$10.00 late fee is in addition to the regular registration fee.

***NOTE: REGISTRATION SUBSTITUTIONS ARE NOT ALLOWED.***

# What is LHRMA?

---

The purpose of the Lincoln Human Resource Management Association is:

To provide for the interchange of ideas, experiences, and methods concerning the relationships between management and employees, and to promote professional ethics and acquaintanceship among those involved in professional human resource management.

## Benefits of Membership

- HR Information
- Committee Work with Peers
- Monthly Newsletter
- Option to participate and purchase Area Salary & Benefits Survey
- PHR/SPHR/GPHR Certification Course
- Career Development
- Website
- Legislative Updates
- Membership Directory
- Professional Networking
- Scholarship Programs
- Monthly Meetings/Workshops
- Diversity Programs

**Dues:** Annual dues are \$50 per individual and are based on the calendar year.

**Membership Requirements:** See Constitution and By-Laws, page 71.

LHRMA memberships are based on the individual. There are no corporate or institutional memberships.

This directory contains proprietary information and must not be used for solicitation purposes. It must not be disclosed, reproduced, distributed, or used by an individual, organization, or entity that is not affiliated with LHRMA without the prior express written consent of LHRMA.

# WHAT IS THE NEBRASKA SHRM STATE COUNCIL?

---

The Nebraska SHRM State Council is a group of professional HR representatives from a variety of businesses, including the president of each SHRM affiliated chapter, whose purpose is to: 1) provide channels of communication between local chapters, SHRM members, and the SHRM North Central Region, 2) serve as a resource regarding services available to all SHRM members within the state, 3) provide leadership training at the state level, and 4) assist groups of human resources professionals interested in affiliating new Nebraska chapters with SHRM.

Although you are affiliated with a local chapter, there are “at-large” members who are simply national SHRM members. The Nebraska SHRM State Council provides primary support to these individuals and encourages affiliation with a local chapter such as HRAM or LHRMA, the Great Plains Human Resource Management Association (GPHRMA), the Central Nebraska Human Resource Management Association, or the Norfolk Area Human Resource Association.

## SOCIETY FOR HUMAN RESOURCE MANAGEMENT NEBRASKA SHRM STATE COUNCIL - 2011

### **State Director**

Kenda Fink, PHR  
Human Resources Manager  
ALN Medical Management, Inc.  
4433 S 70<sup>th</sup> Street, Suite 100  
Lincoln, NE 68516  
PH: (402) 486-7118  
FAX: (402) 434-6037  
e-mail: kfink@alnhmm.com

### **Secretary, Treasurer**

Cindy Mefford, PHR  
Director of Human Resources  
Eastmont Towers  
6315 “O” Street  
Lincoln NE 68510  
(402) 486-2221  
Fax: (402) 486-2260  
cindym@eastmonttowers.com

### **Immediate Past State Council Director**

Michele Spadt, PHR  
Human Resources Director  
Lincoln Surgical Hospital  
1710 S. 70th Street  
Lincoln, NE 68506  
(402) 484-9016  
Fax: (402) 483-0476  
mspadt@lincolnsurgery.com

### **At-Large Director**

(Columbus Chapter)  
Scott Messersmith, PHR  
Director of Human Resources  
Columbus Community Hospital  
4600 38th Street  
Columbus, NE 68601  
PH: (402) 562-3368  
FAX: (402) 562-3378  
e-mail: semessersmith@columbushosp.org

**SOCIETY FOR HUMAN RESOURCE MANAGEMENT  
NEBRASKA SHRM STATE COUNCIL - 2011**

**Special Initiatives Director**

Dave Zelnio, PHR  
Vice President  
News Link  
1845 South 11th Street  
Lincoln, NE 68502  
(402) 304-0086 (cell)  
Fax: (402) 475-6398  
dave@newslink.com

**Chapter President**  
**CNHRMA President (#0578)**

(Central Nebraska Human Resource  
Management Association)  
Melissa Karloff  
Human Resources Manager  
ThermoKing  
1800 Centennial Ave.  
Hastings, NE 68901  
(402) 461-2205  
(402) 461-0500  
Melissa\_karloff@thermoking.com

**Chapter President**  
**HRAM President (#0019)**

(Human Resource Association of the  
Midlands)  
Robin Arens, PHR  
Account Executive  
Client Resources, Inc.  
2120 S 72nd Street, Suite 620 Omaha Ne  
68124  
(402) 926-2000  
Fax: (402) 415-3200  
rarens@clientresourcesinc.com

**Chapter President**

**CAHRA President (#00??)**  
(Columbus Area Human Resource  
Association)  
Angie Wright  
Director of Human Resources  
Katana Summit, LLC  
1600 East 29th Ave.  
Columbus, NE 68601  
(402) 563-9318  
Fax (402) 563-7067  
awright@Katana-Summit.com

**Chapter President**  
**GPHRMA President (#0564)**

(Great Plains Human Resource  
Management Association)  
Leanne Miller  
Human Resources Director  
Community Hospital  
P.O. Box 1328  
McCook, NE 69001  
(308) 344-8381  
(308) 344-8358  
lrmiller@chmccook.org

**Chapter President**  
**LHRMA President (#0048)**

(Lincoln Human Resource Management  
Association)  
Mark Pankoke, SPHR  
Human Resources Manager  
Madonna Rehabilitation Hospital  
5401 South Street  
Lincoln, NE 68506  
(402) 483-9595  
Fax (402) 483-9589  
mpankoke@madonna.org

**SOCIETY FOR HUMAN RESOURCE MANAGEMENT  
NEBRASKA SHRM STATE COUNCIL - 2011**

**Chapter President**

**NAHRA President (#0677)**

(Norfolk Area Human Resource Association)

Brenda J Jones

HR Analyst / Payroll

Faith Regional Health Services

1500 Koenigstein Ave

Norfolk NE 68701

Phone (402) 644-7298

Fax (402) 644-7324

Email: [bjones@frhs.org](mailto:bjones@frhs.org)

**College Relations Director**

Becky Golden, SPHR

District EEO Officer

Kiewit Building Group Inc.

3921 Mason Street

Omaha, NE 68105

(402) 977-5154

Fax: (402) 977-4548

[becky.golden@kiewit.com](mailto:becky.golden@kiewit.com)

**District Director - West**

Ray Weinberg, SPHR, CCP

metapHRases Solutions

P.O. Box 4157 – Benson Station

Omaha, NE 68104

(402) 451-8774

Fax:

[rsweinberg@cox.net](mailto:rsweinberg@cox.net)

**Legislative Director**

Christopher Hedican

Baird Holm LLP

1500 Woodmen Tower

1700 Farnam Street

Omaha, NE 68102-2068

(402) 636-8311

Fax: (402) 344-0588

[chedican@bairdholm.com](mailto:chedican@bairdholm.com)

**Membership Director**

Ruth Jones, SPHR

Human Resource Manager

Nebraska Book Company

4700 S 19th Street

PO BOX 80529

Lincoln, NE 68501-0529

PH: 402-421-0464

FAX: 402-421-0001

[rjones@nebook.com](mailto:rjones@nebook.com)

**District Director -East**

Marty Callaghan, SPHR

Principal

HR Strategies, LLC

848 S. 122nd Street

Omaha, NE 68154

(402) 334-8321

Fax: 402-884-4337

[hrstrategiesllc@cox.net](mailto:hrstrategiesllc@cox.net)

**Diversity Director**

Lanelle McInturf, SPHR

Director Human Resources

Lutheran Family Services of NE, Inc.

124 South 24th Street, Ste. 230

Omaha NE 68102

(402) 978-5608

Fax: (402) 978-5660

[lmcinturf@lfsneb.org](mailto:lmcinturf@lfsneb.org)

**Professional Dev. Director**

Kathy M. Kruse

Payroll Coordinator/HR

Columbus Community Hospital

P O Box 1800

Columbus, NE 68661

(402) 562-3363

Fax: (402) 562-3378

[kmkruse@columbushosp.org](mailto:kmkruse@columbushosp.org)



**SOCIETY FOR HUMAN RESOURCE MANAGEMENT  
NEBRASKA SHRM STATE COUNCIL - 2011**

**Public Relations Director**

Jason Barelman  
Director, Career Services  
Wayne State College  
1111 Main Street  
Wayne, NE 68787  
(402) 375-7487  
Fax: (402) 375-7072  
jabarel1@wsc.edu

**State Conference Director-Elect**

Cathy Maddox  
HR Coordinator  
Speedway Motors  
340 Victory Lane  
Lincoln, NE 68528  
(402) 323-3249  
Fax: (402) 323-3248  
cmaddox@speedwaymotors.com

**SHRM Foundation Director**

Leslie Smith, PHR  
Human Resources Manager  
Bosselman, Inc.  
3123 W Stolley Park Rd Ste A  
Grand Island, NE 68802-4905  
(308) 381-2800 Ext 362  
Fax:  
Leslie.smith@bosselman.com

**State Conference Director**

Gaylene Brennan, PHR  
Human Resources Manager  
Lamp, Rynearson & Associates, Inc.  
14710 West Dodge Road, Suite 100  
Omaha, NE 68154  
(402) 496-2498  
Fax: (402) 496-2730  
Gaylene.Brennan@LRA-Inc.com

**Workforce Readiness Director**

Judy Fischer  
Human Resources Manager II  
Cabela's Inc.  
4800 NW 1st St., Suite 202  
Lincoln, NE 68521-4463  
(402) 323-4448  
Fax: (402) 323-4445  
Judy.fischer@cabelas.com

**Certification Director**

Melissa Price, PHR  
Human Resource Assistant Manager  
Nebraska Book Company  
4700 S 19th Street  
Lincoln, NE 68512  
(402) 421-0402  
Fax: (402) 421-0001  
mprice@nebook.com

***SHRM Contacts:***

**Field Services Director**

Nancy Conway, SPHR  
Contact info TBA

**Regional Administrator**

Kristine Hofmann  
1800 Duke Street  
Alexandria, VA 22314  
PH: (800) 283-7476, x. 3333  
FAX: (703) 739-0399  
kristine.hofmann@shrm.org

***Positions on the Nebraska SHRM State Council are annually appointed positions.***

# WHAT IS SHRM?

---



The Society for Human Resource Management (SHRM) is the leading voice of the human resource profession, representing the interests of more than 225,000 professional and student members. LHRMA is the local chapter of SHRM. LHRMA encourages its members to join SHRM; however, SHRM membership is not required to be a LHRMA member. Following are some of the benefits of a SHRM membership:

## **A VOICE IN WASHINGTON**

- Representation
- Membership Involvement
- Direction
- Legislative Updates

## **INFORMATION RESOURCES**

- HR Knowledge Center
- White Papers
- Sample Forms & Toolkits

## **PUBLICATIONS & SUBSCRIPTIONS**

- HR Magazine®
- HR Week
- SHRM Legal Report
- Mosaics™
- Research Reports

## **PROFESSIONAL DEVELOPMENT**

- Annual Conference and Exposition
- Seminars
- Legislative Conference and Legal Update
- SHRM Learning System
- Self-Study Products
- Books – Videos
- HR Salary & Benefit Surveys
- SHRM Academy

## **Join SHRM**

And put these resources to work for you today!

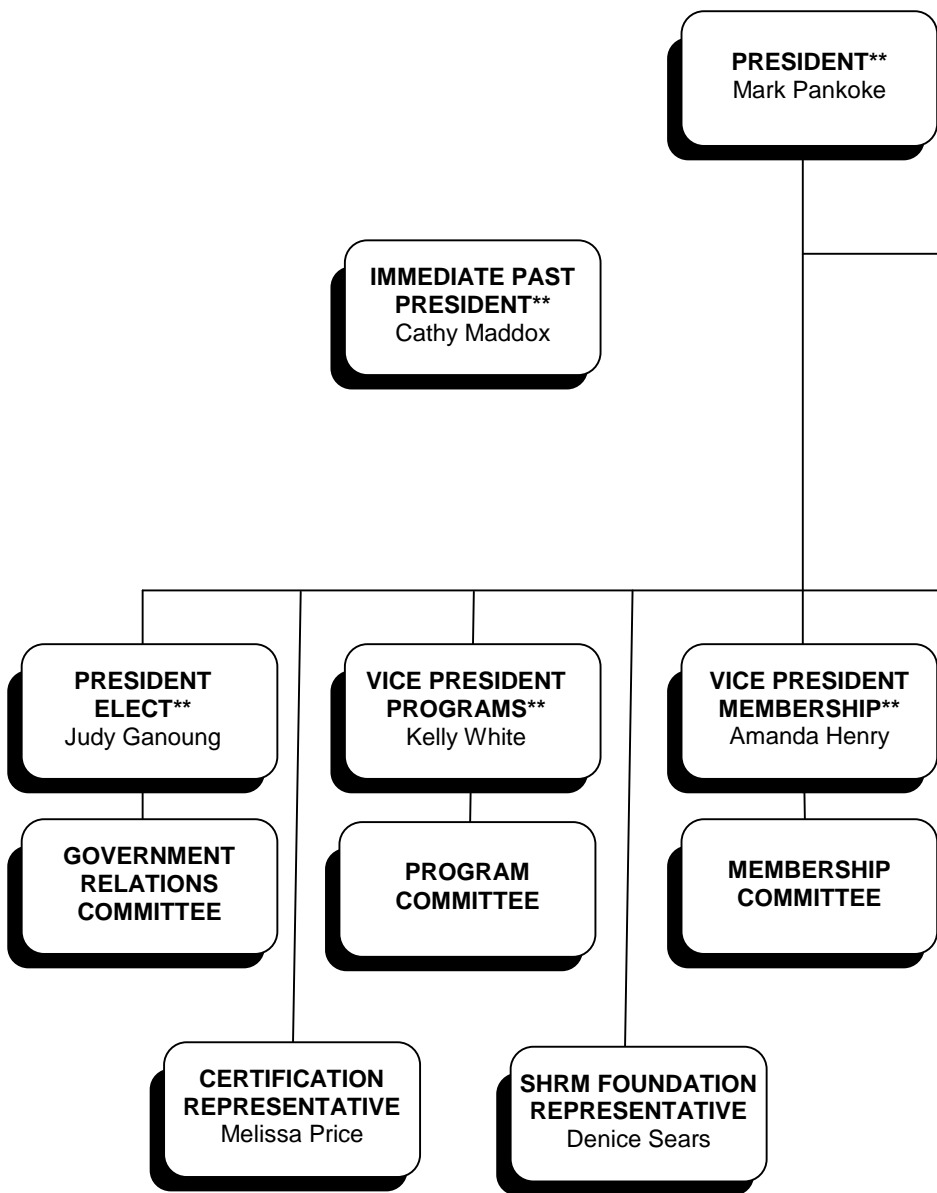
Contact SHRM Membership Services at **(800) 283-SHRM**  
For additional information or to join on-line, visit **[www.shrm.org](http://www.shrm.org)**

# CODE OF ETHICS

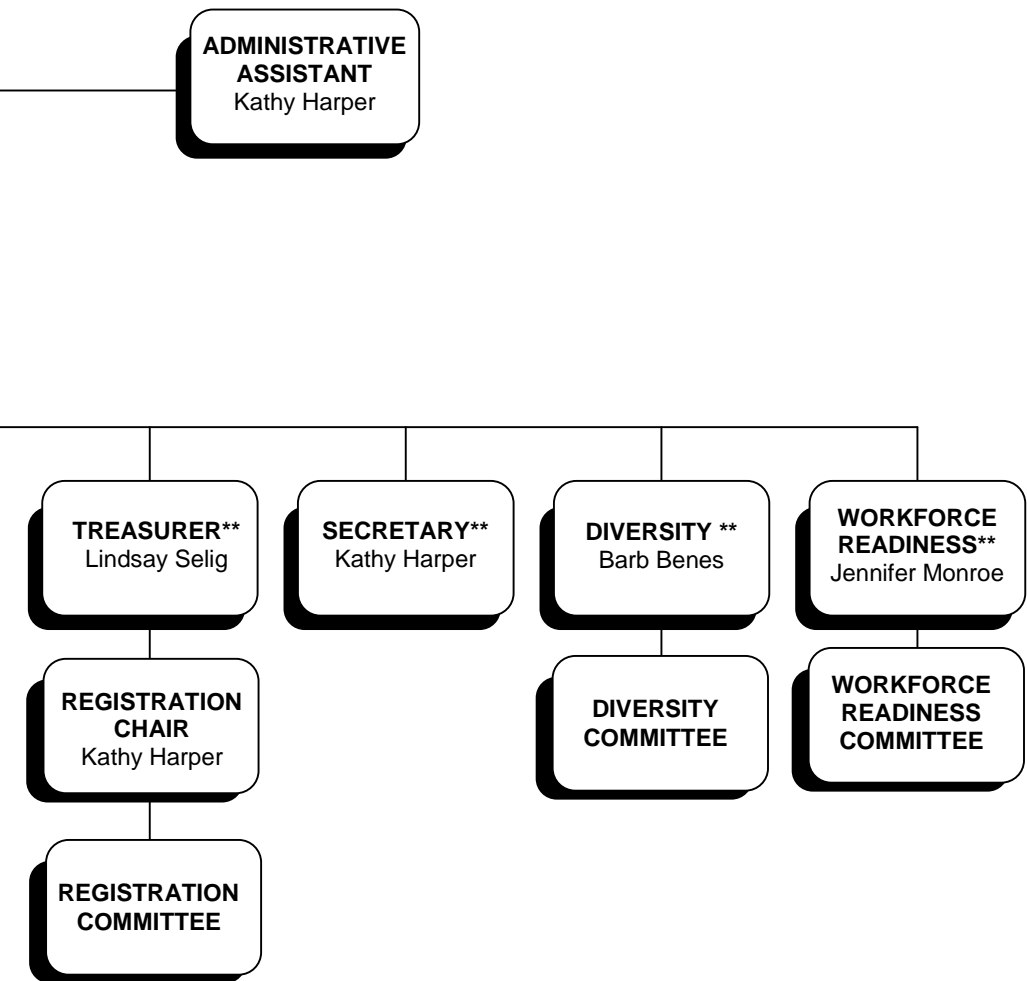
---

*As a member of the Lincoln Human Resource Management Association, an affiliate of the Society for Human Resource Management, I recognize and accept the responsibility incumbent upon me as a member of the Human Resource profession. I pledge myself to observe, practice and maintain the following ethical practices of the profession:*

- Advance all ethical human resource administration and labor relations concepts, methods and skills that contribute to productivity and profitability of an enterprise.
- Recognize and support the essential authority and responsibility for sound human resource administration and labor relations.
- Promote acceptance by line management of its primary responsibility for sound human resource administration and labor relations.
- Respect and adhere to the principle of the staff and advisory nature of human resource administration.
- Effectively and efficiently administer the human resource and labor relations functions and activities.
- Periodically evaluate all human resource administration activities and promptly take the necessary action to maintain an economically efficient operation.
- Encourage and participate in continuous research for the development and advancement of new, improved human resource administration principles, methods, skills and practices, making all findings available to others; likewise, keeping abreast of the findings of others.
- Demonstrate and persuade others to accept the values of recognizing the development and dignity of the individual human being as one of the essential factors for success in any enterprise and in the American way of life.
- Develop and promote a spirit of cooperative team work among members of management, owners, employees, and those of the general public directly or indirectly connected with the enterprise.
- Accept no remuneration or compensation from persons whose products or services I recommended or use in the performance of my functions and activities.
- Never use the Society or its membership for purposes other than those for which they were designed.



# 2011 LHRMA Organizational Chart



*\*\*Denotes members of the Executive Committee*

# 2011 LHRMA

## Board Members and Officers

---



**President**  
Mark Pankoke  
483-9595  
president@  
lincolnhr.org



**Past President**  
Cathy Maddox  
323-3249  
pastpresident@  
lincolnhr.org



**President Elect /  
Gov't Relations**  
Judy Ganoung  
474-3183  
govt.relations@  
lincolnhr.org



**Program Chair**  
Kelly White  
560-1107  
programs@  
lincolnhr.org



**Secretary-Publicity**  
Kathy Harper  
483-4581  
secretary@  
lincolnhr.org



**Treasurer &  
Registration Chair**  
Lindsay Selig  
484-0921  
treasurer@  
lincolnhr.org



**Membership Chair**  
Amanda Henry  
476-2542  
membership@  
lincolnhr.org



**Diversity Chair**  
Barb Benes  
467-8812  
diversity@  
lincolnhr.org



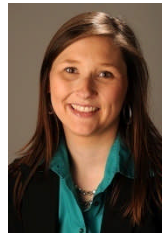
**Workforce  
Readiness Chair**  
Kim Michael  
441-4350  
workforce.readiness  
@lincolnhr.org



**College Relations  
Chair**  
Jennifer Monroe  
471-4121  
college.relations@  
lincolnhr.org



**SHRM Foundation  
Representative**  
Denise Sears  
479-3656  
SHRM@  
lincolnhr.org



**Certification  
Director**  
Melissa Price  
421-0402  
certification@  
lincolnhr.org

# LHRMA Membership Roster

---

*By Individual*

---

*\*Denotes member of Society for Human Resource Management (SHRM)*

---

**TINA ADAMS PHR \***

US BENEFITS SPECIALIST  
RITCHIE BROS. AUCTIONEERS  
4000 PINE LAKE ROAD  
LINCOLN, NE 68516  
402.421.0292  
tadams@rbauktion.com

**THOMAS ALEXANDER PHR**

1909 SOUTH 77TH STREET  
LINCOLN, NE 68506-1806  
402.489.6854  
TAlexander6@gmail.com

**ELIZABETH AMBRI**

BRANCH MANAGER  
CELEBRITY STAFFING  
770 N COTNER BLVD STE 325  
LINCOLN, NE 68505  
402.464.0600  
eambri@celebritystaff.com

**JACKIE AMOS**

HUMAN RESOURCES  
REPRESENTATIVE  
NEBRASKA LABLINC  
5440 SOUTH ST STE 100  
LINCOLN, NE 68506  
402.465.1978  
jackie.amos@lablinc.com

**RON ANDERSON MA \***

DIRECTOR OF EMPLOYEE RELATIONS  
BRYANLGH HEALTH SYSTEM  
1600 SOUTH 48TH ST  
LINCOLN, NE 68506-1299  
402.481.8618  
ron.anderson@bryanlgh.org

**KRISTI ANDERSON PHR**

HUMAN RESOURCES ADMINISTRATOR  
RUNZA NATIONAL  
5931 SOUTH 58TH ST STE C  
LINCOLN, NE 68516-3640  
402.423.2394  
kanderson@runzanational.com

**NICK ANDERSON PHR \***

HUMAN RESOURCES DIRECTOR  
LINCOLN ORTHOPAEDIC CENTER PC  
PO BOX 6939  
LINCOLN, NE 68506  
402.436.2901  
nanderson@ortholinc.com

**LORI ANDERSON SPHR \***

SR HR GENERALIST  
WINDSTREAM  
PO BOX 81309  
LINCOLN, NE 68501-1309  
402.436.5322  
lori.anderson@windstream.com

**KIM ANVILLE PHR \***

HUMAN RESOURCE REPRESENTATIVE  
COOPER NUCLEAR STATION  
PO BOX 98  
BROWNVILLE, NE 68321-0098  
402.825.2890  
kjanvil@nppd.com

**DENICE ARCHER**

DIRECTOR  
COLLEGE OF SAINT MARY  
1109 N COTNER BLVD  
LINCOLN, NE 68505  
402.489.2900  
darcher@csm.edu

**CARRIE AREHART SILLS**

DIRECTOR OF HR  
MI INDUSTRIES  
6200 N 56TH STREET  
LINCOLN, NE 68504  
402.466.8302  
csills@miindustries.com

**ROD ARMSTRONG**

VP of STRATEGIC PARTNERSHIP  
AIM INSTITUTE  
4701 INNOVATION DRIVE  
SUITE 101  
LINCOLN, NE 68521  
402.323.0703  
rod@aiminstitute.org

**VEDA ARMSTRONG**

HUMAN RESOURCES SPECIALIST  
FAMILY SERVICE  
501 SOUTH 7TH ST  
LINCOLN, NE 68508-2920  
402.441.7949  
varmstrong@familyservicelincn.org

**ASHLEY ARNER \***

HUMAN RESOURCES ASSISTANT  
NOVARTIS CONSUMER HEALTH  
PO BOX 83288  
LINCOLN, NE 68501  
402.467.8911  
ashley.arnar@novartis.com

**DARLA ATKINSON**

EMPLOYMENT SPECIALIST  
STATE OF NEBRASKA  
3901 N 27TH STREET  
SUITE 6  
LINCOLN, NE 68521-4177  
402.471.6348  
darla.atkinson@nebraska.gov

**KEN BABCOCK**

SUPERVISOR OF EMPLOYEE  
RELATIONS  
LINCOLN PUBLIC SCHOOLS  
5901 O STREET  
LINCOLN, NE 68510  
402.436.1571  
kbabcock@lps.org

**JUDITH BACKHAUS PHR \***

HUMAN RESOURCES COORDINATOR  
LEGISLATIVE COUNCIL  
PO BOX 94604  
LINCOLN, NE 68509-4604  
402.471.0766  
jbackhaus@leg.ne.gov

**JOANNE BARTELS**

CORPHEALTH ACCT EXECUTIVE  
COMPANY CARE  
5000 N 26TH STREET  
SUITE 200  
LINCOLN, NE 68521  
402.475.6656  
jbartels@stez.org

**CANDICE BATENHORST**

HUMAN RESOURCES OFFICER  
NE DEPT OF ENVIRONMENTAL QUALITY  
1200 N STREET  
SUITE 400  
LINCOLN, NE 68508  
402.471.2758  
candice.l.batenhorst@nebraska.gov

**JANET BAUER PHR**

RECRUITER  
MADONNA REHABILITATION HOSPITAL  
5401 SOUTH ST  
LINCOLN, NE 68506  
402.483.9518  
jbauer@madonna.org

**BRANDIE BEALE**

HR RECRUITER  
UNION BANK & TRUST COMPANY  
6811 S 27TH STREET  
LINCOLN, NE 68516  
402.323.115  
brandie.beale@ubt.com

**AMANDA BECKER \***

RECRUITING COORDINATOR  
NELNET  
121 S 13TH STREET  
SUITE 700  
LINCOLN, NE 68508  
402.458.2782  
amanda.becker@nelnet.net



**SUSAN BECKER PHR FLMI \***  
SENIOR HUMAN RESOURCES  
CONSULTANT  
ASSURITY LIFE INSURANCE COMPANY  
1526 K STREET  
LINCOLN, NE 68508-2533  
402.437.4324  
sbecker@assurity.com

**BARBARA BENES SPHR \***  
HUMAN RESOURCES GENERALIST  
NOVARTIS CONSUMER HEALTH INC  
PO BOX 83288  
LINCOLN, NE 68501-3288  
402.467.8812  
barb.benes@novartis.com

**DEBORAH BERG PHR**  
HUMAN RESOURCES PROJECT  
SPECIALIST  
CONTINENTAL WESTERN GROUP  
PO BOX 80439  
LINCOLN, NE 68501-0439  
402.423.7688  
dberg@cwiggins.com

**DONNA BLAKE PHR \***  
HUMAN RESOURCES MANAGER  
NOVARTIS CONSUMER HEALTH INC  
PO BOX 83288  
LINCOLN, NE 68501-3288  
402.467.8802  
donna.blake@novartis.com

**LIN BLODGETT XMBA \***  
HUMAN RESOURCES DIRECTOR  
NEBCO INC  
1815 Y STREET  
LINCOLN, NE 68501  
402.434.1743  
linb@nebcoinc.com

**CHRIS BOCKMANN**  
PRESIDENT  
BOCKMANN, INC.  
1420 CENTERPARK ROAD  
LINCOLN, NE 68512  
402.423.6631  
cab@bockmanninc.com

**ANDREW BOELLSTORFF**  
MANAGER, HUMAN CAPITAL  
DEVELOPMENT  
GT EXHAUST  
4121 NW 37TH STREET  
LINCOLN, NE 68524  
402.323.7279  
aboellstorff@gtexhaust.com

**WAYNE BOLES**  
DIRECTOR OF CORPORATE RELATIONS  
TELESIS INC  
729 Q STREET  
LINCOLN, NE 68508-1331  
402.434.5973  
wboles@telesis-inc.com

**THOMAS BOOTH MA SPHR PLMHP**  
**PLADC CCGC\***  
OWNER  
TC BOOTH MANAGEMENT RESOURCES  
7941 COOPER AVENUE  
LINCOLN, NE 68506-4729  
402.434.3971  
tcbooth@aol.com

**CINDY BOOZE**  
MANAGER, COMPENSATION &  
BENEFITS  
LINCOLN ELECTRIC SYSTEM  
PO BOX 80869  
LINCOLN, NE 68501-0869  
402.473.3217  
cbooze@les.com

**KIMBERLY BOWERS \***  
DIRECTOR OF ADMINISTRATION  
HBE BECKER MEYER LOVE, LLP  
5944 VANDERWOORT DRIVE  
LINCOLN, NE 68516  
402.423.4343  
kbowers@hbecpa.com

**VANESSA BROWN SPHR**  
HR DIRECTOR  
VALMONT  
BOX 358  
VALLEY, NE 68064  
402.359.6035  
vbrown@valmont.com

**BECKY BRUCKNER PHR**  
JUDICIAL ADMINISTRATOR  
LANCASTER COUNTY COURT  
575 SOUTH 10TH STREET  
LINCOLN, NE 68508  
402.441.7295  
bbruckner@lanaster.ne.gov

**MARY BURCHFIELD**  
HR COORDINATOR  
VERIZON WIRELESS  
4600 INNOVATION DRIVE  
LINCOLN, NE 68521  
402.473.6610  
mary.burchfield@verizonwireless.com

**DAVID BURD CHFP**  
VICE PRESIDENT, FINANCE  
NE HOSPITAL ASSOCIATION  
3255 SALT CREEK CIRCLE  
SUITE 100  
LINCOLN, NE 68504  
402.742.8144  
dburd@nhanet.org

**MARY LOU BURNS PHR \***  
HUMAN RESOURCES MANAGER  
AMERITAS LIFE INSURANCE CORP  
475 FALLBROOK BLVD  
LINCOLN, NE 68521  
402.309.2303  
mburns@ameritas.com

**TAMMIE BURNS SPHR \***  
HR MANAGER  
DUNCAN AVIATION  
PO BOX 81887  
LINCOLN, NE 68501-1887  
402.479.1658  
tammie\_burns@duncanaviation.com

**CONNIE BUTLER SPHR \***  
DIRECTOR OF HUMAN RESOURCES  
CONCORDIA UNIVERSITY  
800 NORTH COLUMBIA AVE  
SEWARD, NE 68434  
402.643.7332  
connie.butler@cune.edu

**JEAN BYRNE SPHR \***  
HR CONSULTANT  
VERIZON WIRELESS  
4600 INNOVATION DRIVE  
LINCOLN, NE 68521  
402.473.6613  
jean.byrne@verizonwireless.com

**PATRICIA CABEEN**  
EMPLOYMENT SPECIALIST  
LSI STAFFING  
3814 NORMAL BLVD  
LINCOLN, NE 68508  
402.261.6904  
smile4532@aol.com

**SHIELA CAIN**  
MARKETING DIRECTOR  
PROFESSIONAL CHOICE RECOVERY  
145 NORTH 46TH ST STE 6  
LINCOLN, NE 68503  
402.476.3535  
shiela@pcrpays.com

**ANGELA CALDWELL**  
BRANCH MANAGER  
MANPOWER, INC.  
505 N 27TH STREET  
SUITE 2  
LINCOLN, NE 68503  
402.484.5511  
angela.caldwell@na.manpower.com

**MELISSA CARPENTER \***  
HR DIRECTOR  
NEBRASKA COMMUNITY BLOOD BANK  
100 N 84TH STREET  
SUITE 200  
LINCOLN, NE 68505  
402.486.9424  
mcarpenter@don8bld.org

**PATRICIA CAVANAH**  
16218 REDWOOD STREET  
OMAHA, NE 68136  
pjcavanah@aol.com

**JULIE CAVE \***

REGIONAL HR OPERATIONS MANAGER  
LAIRD TECHNOLOGIES  
3425 N 44TH STREET  
LINCOLN, NE 68504  
402.325.3249  
julie.cave@lairdtech.com

**PEGGY CHANTRY SPHR \***

COMPENSATION COORDINATOR  
BRYANLGH HEALTH SYSTEM  
2300 SOUTH 16TH STREET  
LINCOLN, NE 68502  
402.481.5780  
peggy.chantry@bryanlgh.org

**SARAH CHAPMAN**

PAYROLL & BENEFITS SPECIALIST  
NELNET  
121 S 13TH STREET  
SUITE 700  
LINCOLN, NE 68508  
402.323.4641  
sarah.chapman@nelnet.net

**WENDY CHARLTON**

BENEFITS SPECIALIST  
MADONNA REHABILITATION HOSPITAL  
5401 SOUTH STREET  
LINCOLN, NE 68506  
402.483.9484  
WCharlton@madonna.org

**JENNIFER CHARTIER PHR \***

HUMAN RESOURCE MANAGER  
CONTINENTAL WESTERN GROUP  
3641 VILLAGE DRIVE  
LINCOLN, NE 68516  
402.421.4331  
jchartier@cwiggins.com

**TYRONE CHATMAN**

HR MANAGER  
TRICON INDUSTRIES  
4000 NW 44TH STREET  
LINCOLN, NE 68524  
402.470.3311  
tyrone\_chatman@tstna.com

**AMY CHESLEY**

DIRECTOR  
SOUTHEAST COMMUNITY COLLEGE  
301 SOUTH 68TH STREET  
LINCOLN, NE 68510  
402.437.2709  
achesley@southeast.edu

**STACY CHRISTMANN PHR \***

ASST. HR MANAGER  
COOK'S HAM INC  
200 S 2ND STREET  
LINCOLN, NE 68508  
402.479.1302  
stacy.christmann@cooksham.com

**JOAN CLARE PHR CM \***

PERSONNEL MANAGER  
STATE OF NEBRASKA  
PO BOX 82554  
LINCOLN, NE 68501-2554  
402.471.4779  
Joan.Clare@nebraska.gov

**GINNA CLAUSSEN**

PEOPLE AND CULTURE OFFICER  
GREAT WESTERN BANK  
NEBRASKA REGION  
1235 N STREET  
LINCOLN, NE 68508  
402.473.6226  
ginna.claussen@greatwesternbank.com

**ELIZABETH COKER**

HR GENERALIST  
CRETE CARRIER CORPORATION  
400 NW 56TH STREET  
LINCOLN, NE 68528  
402.479.8757  
ecoker@cretecarrier.com

**GWENDOLYN COMBS PhD \***

ASSOCIATE PROFESSOR  
UNIVERSITY OF NEBRASKA LINCOLN  
274 CBA  
LINCOLN, NE 68588-0491  
402.472.6061  
gcombs2@unl.edu

**NANCY CONWAY SPHR \***

SR HUMAN RESOURCE MANAGER  
CABELA'S INC  
4800 NW 1ST ST STE 202  
LINCOLN, NE 68521  
402.323.4447  
nancy.conway@cabelas.com

**NANCY COOKSON SPHR \***

ASST VICE PRESIDENT HUMAN  
RESOURCES  
NEBRASKA WESLEYAN UNIVERSITY  
5000 SAINT PAUL AVENUE  
LINCOLN, NE 68504-2794  
402.465.2117  
nbc@nebrwesleyan.edu

**AMY COX PHR \***

VERIZON WIRELESS  
4600 INNOVATIONS DRIVE  
LINCOLN, NE 68521  
402.473.6612  
amy.cox@verizonwireless.com

**MICHAEL COX**

VP HR/WEELLNESS/PROFESSIONAL  
DEVELOPMENT  
DUNCAN AVIATION  
3701 AVIATION ROAD  
PO BOX 81887  
LINCOLN, NE 68501  
402.479.4298  
michael.cox@duncanaviation.com

**MARILYN CRAWFORD**

EXECUTIVE SECRETARY  
LINCOLN HOUSING AUTHORITY  
5700 R STREET  
LINCOLN, NE 68505  
402.434.5550  
marilync@l-housing.com

**SUSAN CROCKER**

HR REP  
CABELA'S INC  
4800 NW 1ST STREET  
SUITE 202  
LINCOLN, NE 68521  
402.323.4444  
susan.crocker@cabelas.com

**MARY CROOK SPHR \***

ADJUNCT INSTRUCTOR  
SOUTHEAST COMMUNITY COLLEGE  
8800 O STREET  
LINCOLN, NE 68520  
acrook@neb.rr.com

**JANET CROW**

PEOPLE RESOURCE GENERALIST  
GT EXHAUST  
4121 NW 37TH STREET  
LINCOLN, NE 68524  
402.323.7294  
jcrow@gtexhaust.com

**MANDY CUNNINGHAM**

1012 PLUM STREET  
LINCOLN, NE 68502  
mcunningham.jan3@gmail.com

**JOSETTE DALTON**

ASSISTANT TO THE PRESIDENT  
MIDLANDS FINANCIAL BENEFITS  
7101 S 82ND STREET  
LINCOLN, NE 68516  
402.434.8050  
jdalton@midfin.com

**SCOTT DANIELL**

PR/RECRUITER  
GALLUP  
210 GATEWAY  
LINCOLN, NE 68510  
402.325.2224  
scott\_daniell@gallup.com

**DIXIE DAVIS SPHR \***

DIRECTOR OF HUMAN RESOURCES  
FARMERS MUTUAL INS CO OF NE  
PO BOX 81529  
LINCOLN, NE 68501  
402.434.8360  
ddavis@fmne.com

**LESA DEEKER SPHR**  
CONSULTANT/TRAINER  
BEST CARE EAP  
9239 W CENTER ROAD  
OMAHA, NE 68124  
402.354.8000  
Lesa.Deeker@BestCareEAP.org

**AARON DELAHOYDE SPHR \***  
EMPLOYMENT MANAGER  
BRYANLGH HEALTH SYSTEM  
1600 SOUTH 48TH ST  
LINCOLN, NE 68506  
402.481.3167  
aaron.delahoyde@bryanlgh.org

**CHANTEL DENKER PHR \***  
HR MANAGER  
HUGHES BROTHERS  
210 N 13TH  
PO BOX 159  
SEWARD, NE 68434  
402.634.2991  
chantel@hughesbros.com

**CHARLENE DENNER**  
415 BLUE FLAME ROAD  
LINCOLN, NE 68521  
402.475.5100  
chardenner@gmail.com

**SHIRLEY DETTMER \***  
HR COORDINATOR  
RITCHIE BROS  
4000 PINE LAKE ROAD  
LINCOLN, NE 68516-5484  
402.421.0238  
sdettmer@rbaction.com

**KIM DOERR PHR \***  
DIRECTOR OF HUMAN RESOURCES  
SYSCO LINCOLN  
1700 CENTRAL PARK ROAD  
LINCOLN, NE 68501-0068  
402.421.5212  
kdoerr@lincoln.sysco.com

**KATHIE DRAGOO**  
H.R. MANAGER/ACCOUNTANT  
DISTRIBUTION INC  
PO BOX 29166  
6363 N 70TH STREET  
LINCOLN, NE 68529  
402.467.4585  
kdragoo@distributioninc.biz

**MARSHA DREESSEN SPHR, GPHR \***  
DIRECTOR OF GLOBAL REWARDS  
KENEXA TECHNOLOGY INC  
2930 RIDGE LINE ROAD  
LINCOLN, NE 68516  
402.419.5301  
marsha.dreesen@kenexa.com

**SUZANNE DREW**  
SR HUMAN RESOURCES GENERALIST  
NOVARTIS CONSUMER HEALTH, INC.  
PO BOX 83288  
LINCOLN, NE 68501  
402.467.8808  
suzanne.drew@novartis.com

**WILLIAM DULY**  
PERSONNEL GENERALIST  
UNIVERSITY OF NEBRASKA - LINCOLN  
IANR, GREATER NE BUSINESS CTR  
1071 COUNTY RD G  
ITHACA, NE 68033-2234  
402.624.8086  
wduly2@unlnotes.unl.edu

**LAURI EARHART**  
HUMAN RESOURCE MANAGER  
LESTER ELECTRICAL  
625 WEST A STREET  
LINCOLN, NE 68522-1794  
402.441-3720  
laurie@lesterelctrical.com

**CINDY EBERSPACHER PHR \***  
HR CONSULTANT - BUSINESS ANALYST  
AMERITAS LIFE INSURANCE CORP  
PO BOX 81889  
LINCOLN, NE 68501  
402.467.7167  
ceberspacher@ameritas.com

**GREG EDEN SPHR**  
HUMAN RESOURCE DIRECTOR  
MOLEX  
700 KING BIRD ROAD  
LINCOLN, NE 68521-3000  
402.458.8715  
geden@molex.com

**COLLEEN EICKMEIER PHR \***  
EMPLOYMENT COORDINATOR  
BRYANLGH HEALTH SYSTEM  
2300 SOUTH 16TH ST  
LINCOLN, NE 68502-3780  
402.481.5701  
ceickmeier@bryanlgh.org

**JULIE EILERS PHR \***  
HR ADVISOR  
NE HEART INSTITUTE  
7440 SOUTH 91ST ST  
LINCOLN, NE 68521  
402.328.3830  
jeilers@neheart.com

**YOLANDA ELEDGE**  
SENIOR ACCOUNT MANAGER  
AIM INSTITUTE  
4701 INNOVATION DRIVE  
SUITE 101  
LINCOLN, NE 68521  
402.345.5025  
yeledge@careerlink.com

**NATE ELGERT CPC**  
SENIOR ACCOUNT MANAGER  
AUREUS GROUP  
770 N COTNER  
SUITE 325  
LINCOLN, NE 68505  
402.464.4488  
nelgert@aureusgroup.com

**LISA ELGERT**  
HR COORDINATOR  
OLSSON ASSOCIATES  
1111 LINCOLN MALL  
SUITE 111  
LINCOLN, NE 68501  
402.458.5953  
lelgert@oaconsulting.com

**BRIAN EMMEL \***  
DIRECTOR OF HR  
NOVARTIS  
PO BOX 83288  
LINCOLN, NE 68501  
402.467.8908  
brian.emmel@novartis.com

**JENNIE ERNEST**  
HUMAN RESOURCES COORDINATOR  
UNIVERSITY OF NEBRASKA  
FOUNDATION  
1010 LINCOLN MALL  
SUITE 300  
LINCOLN, NE 68508  
402.458.1220  
jernerest@nufoundation.org

**PAUL ESSMAN MSBA \***  
MANAGING PARTNER  
CAPITAL CITY CONCEPTS LLC  
528 SOUTH 13TH ST STE 1  
LINCOLN, NE 68508-2702  
402.475.4994  
npcessman@aol.com

**MICHELLE EUREK**  
ASST MGR HUMAN RESOURCES  
KAWASAKI MOTORS MFG CORP USA  
PO BOX 81469  
LINCOLN, NE 68501-1469  
402.476.6600  
meurek@lcn.kmmfg.com

**BOB EVNEN J.D.**  
PARTNER  
WOODS & AITKEN, LLP  
301 S 13TH STREET  
SUITE 500  
LINCOLN, NE 68508  
402.437.8518  
revnen@woodsaitken.com

**MARK FAHLESON**  
ATTORNEY  
REMBOLT LUDTKE LLP  
1201 LINCOLN MALL STE 102  
LINCOLN, NE 68508-2888  
402.475.5100  
mfahleson@remboltludtke.com

**SHARON FENN**

LEGAL ADMINISTRATOR  
BAYLOR EVVEN CURTISS GRIMIT &  
WITT, LLP  
WELLS FARGO CENTER  
1248 O STREET, SUITE 600  
LINCOLN, NE 68508  
402.475.1075  
SFENN@BAYLOREVNEN.com

**MESHELLE FERGUSON SPHR \***

HUMAN RESOURCES SITE MANAGER  
COOPER NUCLEAR STATION  
PO BOX 98  
BROWNVILLE, NE 68321-0098  
402.825.5301  
mafergu@nppd.com

**REBECCA FERGUSON \***

HUMAN RESOURCE GENERALIST  
STEPHENS & SMITH CONSTRUCTION  
1542 SOUTH 1ST STREET  
LINCOLN, NE 68502-1999  
402.479.6402  
bferguson@stephensandsmith.com

**ANGELA FINCH**

HR MANAGER  
HOLIDAY INN DOWNTOWN  
141 N 9TH STREET  
LINCOLN, NE 68508  
402.475.4011  
afinch@vestahospitality.com

**KENDA FINK PHR \***

HUMAN RESOURCES MANAGER  
ALN MEDICAL MANAGEMENT INC  
PO BOX 6971  
LINCOLN, NE 68506  
402.486.7118  
kfink@alnm.com

**JUDY FISCHER**

HUMAN RESOURCES MANAGER II  
CABELA'S INC  
4800 NW 1ST ST STE 202  
LINCOLN, NE 68521  
402.323.4448  
judy.fischer@cabelas.com

**JAMES FISCHER SPHR**

ASST. DIRECTOR, COMPENSATION &  
EMPLOYMENT  
UNIVERSITY OF NEBRASKA LINCOLN  
7911 MEREDETH COURT  
LINCOLN, NE 68506  
402.472.3101  
jfischer1@unl.edu

**LOIS FISHER**

DIRECTOR OF HUMAN RESOURCES  
THE AMBASSADOR LINCOLN  
4405 NORMAL BLVD  
LINCOLN, NE 68506  
402.484.4552  
lfisher@ambhealthsys.com

**JANE FLYNN**

COMPENSATION & BENEFITS MGR  
LI-COR INC  
PO BOX 4425  
4647 SUPERIOR STREET  
LINCOLN, NE 68504  
402.467.3576  
jane.flynn@licor.com

**YVETTE FRANK**

EMPLOYER OUTREACH  
STATE OF NEBRASKA  
233 S 10TH ST STE 100  
LINCOLN, NE 68508-2250  
402.471.1183  
yvette.frank@nebraska.gov

**DUANA FREEMAN**

CLAIMS ADVOCATE  
UNICO GROUP, INC.  
4435 O STREET  
LINCOLN, NE 68510  
402.434.7253  
dfreeman@unicogroup.com

**BRADLEY FUCHS**

HUMAN RESOURCE COORDINATOR  
DEVELOPMENTAL SERVICES OF  
NEBRASKA  
201 SW 25TH STREET  
LINCOLN, NE 68522  
402.325.8555  
bfuchs@dsnonline.org

**JENNY GALL PHR \***

DIRECTOR HUMAN RESOURCES  
STERLING NATIONAL CORPORATION  
5001 CENTRAL PARK DR  
LINCOLN, NE 68504  
402.466.5510  
jenny.gall@zcsterling.com

**CHRIS GALLENTINE \***

ASSISTANT DIRECTOR  
HEARTLAND BIG BROTHERS BIG  
SISTERS  
6201 HAVELOCK AVENUE  
LINCOLN, NE 68507  
402.464.2227  
cgallentine@hbbbs.org

**JUDY GANOUNG \***

FISCAL & HR DIRECTOR  
NE ADVOCACY SERVICES INC  
134 S 13TH ST STE 600  
LINCOLN, NE 68508  
402.474.3183  
judy@nas-pa.org

**KENDAL GARRISON \***

MANAGER OF HR, SAFETY &  
WELLNESS  
TMCO, INC  
535 J STREET  
LINCOLN, NE 68508  
402.476.0013  
kgarrison@tmcoinc.com

**SHERYL GARTNER**

ASST. DIR. HUMAN RESOURCES  
UNIVERSITY OF NEBRASKA LINCOLN  
901 N 17TH STREET  
327 NE HALL  
LINCOLN, NE 68588-0521  
402.472.7160  
sgartner@nebraska.edu

**SANDRA GAUSE \***

USDA RURAL DEVELOPMENT  
100 CENTENNIAL MALL  
ROOM 152  
LINCOLN, NE 68508  
402.437.5517  
sandra.gause@ne.usda.gov

**CHRIS GENGENBACH SPHR**

SENIOR HR FACILITATOR  
UNIVERSITY OF NEBRASKA - LINCOLN  
ROOM 407  
CANFIELD ADMINISTRATION BLDG  
LINCOLN, NE 68588  
402.472.8042  
cgengenbach2@unl.edu

**GEORGIA GLASS SPHR \***

VICE PRESIDENT FOR HUMAN  
RESOURCES  
CAMERON GENERAL  
CONTRACTORS/RESORT LIFESTYLE  
COMM  
8040 EIGER DRIVE  
LINCOLN, NE 68516  
402.420.2311  
gglass@rlcommunities.com

**JANE GOERTZEN \***

DIRECTOR OF HUMAN RESOURCES  
CRETE CARRIER CORP  
PO BOX 81228  
LINCOLN, NE 68501-1228  
402.479.7064  
jgoertzen@cretecarrier.com

**TAMARA GREEN \***

ASST. HR MANAGER  
STATE FARM INSURANCE  
222 S 84TH STREET  
LINCOLN, NE 68510  
402.327.5659  
tamara.green.gjpl@statefarm.com

**DEBBIE GRIFFIN PHR CEBS \***

BENEFITS ADMINISTRATOR  
UNION BANK & TRUST COMPANY  
6811 S 27TH STREET  
LINCOLN, NE 68516  
402.323.1193  
debbie.griffin@ubt.com



**CATIA GUERRERO**  
PERSONNEL MANAGER  
LINCOLN CHILDREN'S MUSEUM  
1420 P STREET  
LINCOLN, NE 68508  
402.477.4000  
cguerrero@lincolnchildrensmuseum.org

**CAROL GUSTAFSON**  
ASSISTANT DIRECTOR  
SOUTHEAST COMMUNITY COLLEGE  
301 S 68TH STREET PLACE  
LINCOLN, NE 68510  
402.437.2507  
cgustafs@southeast.edu

**LAURIE GYHRA**  
HR REPRESENTATIVE  
STATE FARM INSURANCE  
222 S 84TH STREET  
LINCOLN, NE 68506  
402.327.5341  
laurie.gyhra.sfo4@statefarm.com

**PAULA HALL \***  
AVP, HR  
FIRST STATE BANK  
4131 PIONEER WOODS DRIVE  
#105  
LINCOLN, NE 68506  
402.858.1190  
phall@1fsb.com

**ELLY HARDEKOPF PHR**  
SR HUMAN RESOURCES GENERALIST  
MOLEX  
700 KINGBIRD ROAD  
LINCOLN, NE 68521-3000  
402.458.8762  
elly.hardekopf@molex.com

**KATHY HARPER PHR \***  
HR/ADMINISTRATION DIRECTOR  
LINCOLN MEDICAL EDUCATION  
PARTNERSHIP  
4600 VALLEY ROAD  
SUITE 225  
LINCOLN, NE 68510  
402.483.4581  
kharper@lmep.com

**JANICE HARPER SPHR \***  
HUMAN RESOURCE MANAGER  
FACTS/NELNET BUSINESS SOLUTIONS  
121 S 13TH STREET  
SUITE 201  
LINCOLN, NE 68508  
402.466.1063  
jharper@factsmgt.com

**KARI HERBERT LCSW CEAP \***  
MANAGING MEMBER  
DIRECTIONS EAP, LLC  
4915 OLD CHENEY #100  
LINCOLN, NE 68516  
402.434.2900  
kari.herbert@directionseap.com

**BONNIE HATTERMAN PHR**  
HR GENERALIST  
EXPERIAN  
949 WEST BOND  
LINCOLN, NE 68521  
402.473.4864  
bonnie.hatterman@experian.com

**LORI HEIN SPHR \***  
VICE PRESIDENT OF HUMAN  
RESOURCES  
NEBRASKA BOOK COMPANY  
4700 S 19th Street  
LINCOLN, NE 68512  
402.421.0461  
lhein@nebook.com

**RENEE HENRICH**  
HUMAN RESOURCE SPECIALIST  
LESTER ELECTRICAL  
625 WEST A STREET  
LINCOLN, NE 68522  
402.441.3720  
renee@lesterelectrical.com

**KAREN HENRICKSEN \***  
DIRECTOR OF HUMAN RESOURCES  
BAILEY LAUERMAN  
1248 O STREET  
SUITE 900  
LINCOLN, NE 68508  
402.475.2800  
khenricksen@baileylauerman.com

**AMANDA HENRY \***

HUMAN RESOURCES MANAGER  
MIDWEST TILE, MARBLE AND GRANITE,  
INC.  
200 W INDUSTRIAL LAKE DRIVE  
LINCOLN, NE 68528  
402.476.2542  
ahenry@midwesttile.com

**CRESHA HENRY PHR \***

HR RECRUITER  
STATE FARM INSURANCE  
222 S 84TH STREET  
LINCOLN, NE 68506  
402.327.5217  
cresha.henry.qt9w@statefarm.com

**KRISTI HERMAN**

PAYROLL/BENEFITS ADMINISTRATOR  
FARMERS MUTUAL OF NE  
PO BOX 81529  
LINCOLN, NE 68501  
402.434.8361  
kherman@fmne.com

**ELKE HESSER**

HUMAN RESOURCES DIRECTOR  
LINCOLN POULTRY  
800 CATTAIL ROAD  
LINCOLN, NE 68521  
402.437.3331  
ehesser@lincolnpoultry.com

**SHAWNA HILBERT SPHR \***

REGIONAL HUMAN RESOURCE MGR  
LINCOLN JOURNAL STAR  
926 P STREET  
LINCOLN, NE 68508-3615  
402.473.7412  
shawna.hilbert@lee.net

**TOM HINDS**

EMPLOYER OUTREACH COORDINATOR  
STATE OF NEBRASKA  
233 SOUTH 10TH ST #100  
LINCOLN, NE 68509  
402.471.1173  
tom.hinds@nebraska.gov

**MARY HINDS PHR \***

HUMAN RESOURCE COORDINATOR  
MIDLANDS PACKAGING CORP  
4641 NORTH 56TH STREET  
LINCOLN, NE 68504-1795  
402.464.9124  
hindsm@midlandspkg.com

**MIRANDA HOBELMAN**

HR ASSISTANT  
FIRST STATE BANK  
4131 PIONEER WOODS DRIVE  
#105  
LINCOLN, NE 68506  
402.421.3535  
mhobelman@1fsb.com

**TERRY HOLT**

MEMBER SERVICES REPRESENTATIVE  
NEBRASKA SAFETY COUNCIL  
3243 CORNHUSKER HIGHWAY  
SUITE A10  
LINCOLN, NE 68504  
402.483.2511  
tholt@nesafetycouncil.org

**LISA HOLZ**

HR OFFICER  
LINCOLN REGIONAL CENTER  
6108 S 93rd  
LINCOLN, NE 68526  
402.479.5415  
lisa.holz@nebraska.gov

**GREGORY HOWELL \***

EMPLOYMENT COORDINATOR  
BRYANLGH HEALTH SYSTEM  
1600 SOUTH 48TH ST  
LINCOLN, NE 68506  
402.481.8614  
greg.howell@bryanlgh.org

**JOE HUFFMAN, JR SPHR \***

HUMAN RESOURCE GENERALIST  
DUNCAN AVIATION  
3701 AVIATION RD  
LINCOLN, NE 68524  
402.475.2611  
joe.jr.huffman@duncanaviation.com

**LARRY HUGHES**

ASSISTANT PROFESSOR  
NEBRASKA WESLEYAN UNIVERSITY  
5000 SAINT PAUL AVENUE  
LINCOLN, NE 68504  
402.465.2204  
lhughes@nebrwesleyan.edu

**LADONNA HUMPHREY PHR \***

HR MANAGER  
LENCO PMC  
P.O. Box 590  
WAVERLY, NE 68462-0590  
402.786.2000  
lhumphrey@lencopmc.com

**DAVE HUNT**

SALES COORDINATOR  
ADVANCE SERVICES, INC.  
2949 N 27TH STREET  
LINCOLN, NE 68521  
402.328.0142  
daveh@advanceservices.com

**MELISSA HYNES**

HR SUPERVISOR  
TRACTOR SUPPLY COMPANY  
12851 DOVERS STREET  
WAVERLY, NE 68462  
402.786.6107  
mhynes@tractorsupply.com

**MILIJANA ILIC**

WORKFORCE COORDINATOR  
NE DEPARTMENT OF LABOR  
1010 N STREET  
PO BOX 194  
LINCOLN, NE 68508  
402.471.2377  
milijana.ilic@nebraska.gov

**JERRY LEE JENSEN SPHR \***

HR ADMINISTRATOR  
NEBRASKA STATE PATROL  
PO BOX 94907  
LINCOLN, NE 68509-4907  
402.479.4904  
jerrylee.jensen@nebraska.gov

**KEVIN JOCHUM**

MANAGER  
WORKFORCE UNLIMITED CORP.  
525 N 48TH STREET  
SUITE 202  
LINCOLN, NE 68510  
402.464.2900  
kevin@workforceunlimited.org

**JEAN JOHNSON**

HR COORDINATOR  
AMERITAS LIFE INSURANCE CORP  
475 FALLBROK BLVD  
LINCOLN, NE 68522  
402.309.2559  
jjohnson@ameritas.com

**CAROL JOHNSON \***

HR  
PERRY REID PROPERTIES  
9200 ANDERMATT  
SUITE A  
LINCOLN, NE 68526  
402.488.1666  
cjohnson@perryreid.com

**SARAH JONES SPHR \***

DIRECTOR OF HR & ADMINISTRATION  
NMPP ENERGY  
PO BOX 95124  
LINCOLN, NE 68509-5124  
402.474.4759  
sjones@nmpenergy.org

**LEAH JONES PHR \***

HR MANAGER  
MATHESON LINWELD  
PO BOX 190  
WAVERLY, NE 68462-0190  
402.786.2161  
ljones@mathesongas.com

**RUTH JONES SPHR \***

HUMAN RESOURCE MANAGER  
NEBRASKA BOOK COMPANY  
4700 S 19TH STREET  
PO BOX 80529  
LINCOLN, NE 68501-0529  
402.421.0464  
rjones@nebook.com

**SARAH KAHLER**

HUMAN RESOURCES  
PATHOLOGY MEDICAL  
SERVICES/NEBRASKA LABLING  
5440 SOUTH STREET  
LINCOLN, NE 68506  
402.465.1802  
KahlerS@pmspc.org

**JEFF KANGER**

HR ASSISTANT  
FIRST STATE BANK  
4131 PIONEER WOODS DRIVE  
#105  
LINCOLN, NE 68506  
402.421.3535  
jkanger@1fsb.com

**PATRICIA KANT PHR \***

PERSONNEL COORDINATOR  
CITY OF LINCOLN / LANCASTER  
COUNTY  
555 SOUTH 10TH STREET  
LINCOLN, NE 68508-3999  
402.441.7880  
pkant@lincoln.ne.gov

**MICHELLE KERSHAW PHR**

PEOPLE RESOURCE ASSISTANT  
LINCOLN INDUSTRIES  
2411 DODGE STREET  
LINCOLN, NE 68522  
402.473.2163  
michelle.kershaw@lincolnindustries.com

**TEENA KESLAR**

BENEFITS ANALYST  
NELNET  
121 S 13TH STREET  
SUITE 201  
LINCOLN, NE 68508  
402.458.3046  
Teena.Keslar@nelnet.net

**CHRISTY KILLINGSWORTH GPHR \***

6540 PHEASANT RUN PLACE  
LINCOLN, NE 68516  
402.325.3106  
ckillingsworth@pce.us.com

**GEORGETTE KINGKADE \***

PROGRAM MANAGER  
CONTINUUM EMPLOYEE ASSISTANCE  
1135 M STREET SUITE 400  
LINCOLN, NE 68508-2196  
402.476.0186  
gkingkade@4continuum.com

**SERENITY KINNEY**

BENEFITS SPECIALIST  
NE BOOK COMPANY  
4700 S 19TH STREET  
LINCOLN, NE 68512  
402.421.0422  
skinney@nebook.com

**LAURIE KLOSTERBOER CAE \***

EXECUTIVE DIRECTOR  
NEBRASKA SAFETY COUNCIL INC  
3243 CORNHUSKER HIGHWAY  
SUITE 10  
LINCOLN, NE 68504-1592  
402.483.2581  
kloster@nesafetycouncil.org

**KENDRA KNAUSS PHR**

HR COORDINATOR  
ADVANCE SERVICES, INC.  
2949 N 27TH STREET  
SUITE 202  
LINCOLN, NE 68521  
402.435.5676  
kendra.knauss@advanceservices.com

**CODY KOCH \***

HUMAN RESOURCES ANALYST  
SAINT ELIZABETH HEALTH SYSTEMS  
555 S 70TH STREET  
LINCOLN, NE 68510  
402.219.7315  
ckoch@stez.org

**LARRY KOERNER \***

HR & PURCHASING MANAGER  
BUNGE MILLING  
1405 NORMAN  
CRETE, NE 68333  
402.826.8039  
larry.koerner@bunge.com

**MARK KOLLER \***  
PERSONNEL DIRECTOR  
CITY OF LINCOLN/LANCASTER COUNTY  
555 S 10TH STREET  
SUITE 201  
LINCOLN, NE 68508  
402.441.7888  
mkoller@lincoln.ne.gov

**DAN KRICK PHR \***  
VICE PRESIDENT PEOPLE RESOURCES  
LINCOLN INDUSTRIES  
600 WEST E ST  
LINCOLN, NE 68522  
402.473.4372  
dan.krick@lincolnindustries.com

**ANGELA KUGLER PHR**  
RECRUITER  
MADONNA REHABILITATION HOSPITAL  
5401 SOUTH STREET  
LINCOLN, NE 68506-2134  
402.483.9551  
akugler@madonna.org

**TAMMIE LANG PHR \***  
SOUTHEAST COMMUNITY COLLEGE  
MILFORD, NE  
402.580.1715  
xtam777@yahoo.com

**STEPHEN LANGDON \***  
DIRECTOR OF HUMAN RESOURCES  
LINCOLN ACTION PROGRAM  
210 O STREET  
LINCOLN, NE 68508  
402.471.4515  
slangdon@lincoln-action.org

**AMBER LANNIN**  
HUMAN RESOURCE ASSISTANT  
FACTS/NELNET BUSINESS SOLUTIONS  
121 S 13TH STREET  
SUITE 201  
LINCOLN, NE 68508  
402.466.1063  
alannin@factsmgt.com

**CHARLENE LANT PHR \***  
CHIEF ADMINISTRATIVE OFFICER  
ST MARYS COMMUNITY HOSPITAL  
1314 3RD AVENUE  
NEBRASKA CITY, NE 68410-1999  
402.873.8902  
clant@stez.org

**JANAE LANT PHR \***  
HR GENERALIST  
TENNECO LINCOLN  
600 WEST E STREET  
SUITE 200  
LINCOLN, NE 68522  
402.476.2661  
jlant@tenneco.com

**MISTY LAUER**  
HR COORDINATOR  
WILLMAR ELECTRIC SERVICE  
1441 ADAMS STREET  
LINCOLN, NE 68521  
402.464.1877  
mlauer@willmar-electric.com

**CONNIE LAUGHLIN**  
CORPORATE HUMAN RESOURCE  
SPECIALIST  
ALFRED BENESCH & CO.  
825 J STREET  
LINCOLN, NE 68508  
402.479.2432  
claughlin@benesch.com

**JASON LAURITSEN \***  
VP OF HUMAN RESOURCES  
UNION BANK & TRUST  
6811 S 27TH STREET  
LINCOLN, NE 68516  
402.323.1867  
jason.lauritsen@ubt.com

**JENIFER LAUTENSCHLAGER-DOHMEN  
PHR \***  
HUMAN RESOURCE MANAGER  
STATE OF NEBRASKA  
PO BOX 94759  
LINCOLN, NE 68509  
402.479.4346  
jeni.lautenschlager@nebraska.gov

**MARIAN LAYMAN \***

HR ADMINISTRATOR  
NE DEPT OF CORRECTIONAL  
SERVICES  
PO BOX 94661  
FOLSOM & W PROSPECTOR, BLDG 1  
LINCOLN, NE 68509-4661  
402.479.5752  
marian.layman@nebraska.gov

**MICHELLE LENNERS \***

DIRECTOR HUMAN RESOURCES  
SAMPSON CONSTRUCTION  
3730 S 14TH STREET  
LINCOLN, NE 68502  
402.434.5409  
michelle.lenners@sampson-  
construction.com

**TAMI LEWIS-AHRENDT PHR \***

HUMAN RESOURCES DIRECTOR  
CENTERPOINTE, INC.  
2633 P STREET  
LINCOLN, NE 68508  
402.475.8717  
tlewis-ahrendt@CenterPointe.org

**WENDY LOWERY PHR \***

HUMAN RESOURCES COORDINATOR  
TRI-CON INDUSTRIES, LTD  
4020 NW 36TH STREET  
LINCOLN, NE 68524  
402.470.3454  
wendy\_palensky@tstna.com

**CATHERINE LUND**

HR SPECIALIST  
UNIVERSITY OF NEBRASKA-LINCOLN  
1800 N 33RD STREET  
LINCOLN, NE 68503  
402.472.9333  
clund1@unl.edu

**CATHY MADDOX SPHR \***

HR COORDINATOR  
SPEEDWAY MOTORS INC.  
340 VICTORY LANE  
LINCOLN, NE 68528  
402.323.3249  
clmaddox@speedwaymotors.com

**LOU ANN MANSKE SPHR \***

DIRECTOR HUMAN RESOURCES  
MADONNA REHABILITATION HOSPITAL  
5401 SOUTH STREET  
LINCOLN, NE 68506-2134  
402.483.9588  
lmanske@madonna.org

**DEBORAH MARSHALL PHR \***

5221 S 66TH STREET CIRCLE  
LINCOLN, NE 68516  
402.617.6807  
debbmarshall@yahoo.com

**SUSAN MARTIN**

HR ADMINISTRATOR  
LINCOLN JOURNAL STAR  
926 P STREET  
LINCOLN, NE 68508  
402.473.7121  
susan.martin@lee.net

**DIANA MARTINEZ**

EMPLOYMENT COORDINATOR  
STAFFING SERVICES, INC  
1840 NORTH 48TH STREET  
LINCOLN, NE 68504  
402.465.9060  
dmartinez@staffingservicesne.com

**TRISHA MATEJKA PHR**

HR SR REPRESENTATIVE  
NATIONWIDE INSURANCE  
700 N COTNER BLVD  
LINCOLN, NE 68505  
402.465.3427  
matejkt@nationwide.com

**TERI MATTRAN**

REGIONAL MANAGER  
HASTINGS STATE BANK  
201 SUN VALLEY BLVD  
LINCOLN, NE 68528  
402.474.8440  
terim@hastingsstatebank.com

**KENT MATTSON SPHRCCP CEBS CBP\***

VP HUMAN RESOURCES  
AMERITAS LIFE INSURANCE CORP  
PO BOX 81889  
LINCOLN, NE 68501-1889  
402.467.7160  
kmattson@ameritas.com

**KATIE MAYFIELD \***

HUMAN RESOURCE MANAGER  
PIONEER HI-BRED INTERNATIONAL,  
INC.  
WESTERN BUSINESS UNIT  
8100 S 15TH STREET  
LINCOLN, NE 68512  
402.328.4054  
katie.mayfield@pioneer.com

**DOUG MCDANIEL SPHR \***

DIRECTOR HUMAN RESOURCES  
BRYANLGH HEALTH SYSTEM  
1600 SOUTH 48TH ST  
LINCOLN, NE 68506-1299  
402.481.8616  
dmcDaniel@bryanlgh.org

**RHONDA MCGINNIS \***

HR GENERALIST  
LANDSCAPES UNLIMITED LLC  
1201 ARIES DRIVE  
LINCOLN, NE 68512  
402.420.8250  
rmcGinnis@landscapesunlimited.com

**BARB McINTYRE PHR \***

HR CONSULTANT-TALENT ACQUISITION  
& ASSOC RELATIONS  
AMERITAS LIFE INSURANCE CORP  
PO BOX 81889  
LINCOLN, NE 68501-1889  
402.467.7161  
bmcintyre@ameritas.com

**CINDY MEFFORD PHR \***

DIRECTOR OF HUMAN RESOURCES  
EASTMONT TOWERS  
6315 O STREET  
LINCOLN, NE 68510  
402.486.2221  
cindym@eastmonttowers.com

**JONNIE MEINTS PHR**

HUMAN RESOURCE MANAGER  
CONCORD ENTERPRISES  
1701 Windhoek Dr.  
LINCOLN, NE 68512  
402.421.2551  
jmeints@concordei.com

**PEGGY MERKEL \***

HUMAN RESOURCES MANAGER  
THE CLARK ENERSEN PARTNERS  
1010 LINCOLN MALL  
SUITE 200  
LINCOLN, NE 68508  
402.477.9291  
pmerkel@clarkenersen.com

**SUSAN MERWICK LCSW**

ORGANIZATIONAL SPECIALIST  
CONTINUUM EMPLOYEE ASSISTANCE  
1135 M STREET STE 400  
LINCOLN, NE 68508  
402.476.0186  
smerwick@4continuum.com

**CRYSTAL MEYER**

BENEFITS MANAGER  
NELNET, INC.  
121 S 13TH STREET  
SUITE 201  
LINCOLN, NE 68508  
402.323.4611  
crystal.meyer@nelnet.net

**KIM MICHAEL PHR \***

DIRECTOR OF OPERATIONS & HR  
REGION V SYSTEMS  
1645 "N" STREET  
LINCOLN, NE 68508  
402.441.4350  
kmichael@region5systems.net

**JILL MILLER PHR \***

HUMAN RESOURCES CONSULTANT  
WELLS FARGO  
1248 O STREET  
N8032-038  
LINCOLN, NE 68508  
402.434.4147  
jill.a.miller@wellsfargo.com

**JUDY MILLER**

HUMAN RESOURCES MANAGER  
CEDARS YOUTH SERVICES  
6601 PIONEERS BLVD  
SUITE 1  
LINCOLN, NE 68506  
402.437.8810  
jmiller@cedars-kids.org

**KAREN MILLER**

SENIOR VICE PRESIDENT  
NEBRASKA BANKERS ASSOCIATION  
233 SOUTH 13TH ST STE 700  
LINCOLN, NE 68508-2003  
402.474.1555  
karen.miller@nebankers.org

**CINDY MILLER**

REGIONAL MANAGER  
ADVANCE SERVICES, INC.  
2949 N 27TH STREET  
LINCOLN, NE 68521  
402.328.0142  
cindym@advanceservices.com

**KIM MILLER**

DIRECTOR OF HR  
EYE CARE SPECIALTIES  
7930 O STREET  
LINCOLN, NE 68510  
402.420.2020  
kniller@eyecarespecialties.com

**JENNIFER MONROE SPHR \***

PERSONNEL ANALYST  
STATE OF NEBRASKA  
301 CENTENNIAL MALL SOUTH  
PO BOX 94905  
LINCOLN, NE 68509-4905  
402.471.4121  
jennifer.monroe@nebraska.gov

**ABBE MONTGOMERY**

HR REPRESENTATIVE  
STATE FARM  
222 S 84TH STREET  
LINCOLN, NE 68510  
402.327.5224  
abbe.montgomery.szy8@statefarm.com

**C DOUGLAS MOORE PHR \***

ASST OPERATIONS MANAGER  
NEBRASKA BOOK COMPANY  
4700 SOUTH 19TH ST  
LINCOLN, NE 68512  
402.421.7300  
dmoore@nebook.com

**LISA MOORE PHR \***

HUMAN RESOURCES MANAGER  
UNION BANK & TRUST COMPANY  
6811 S 27TH STREET  
LINCOLN, NE 68516  
402.323.1232  
lisa.s.moore@ubt.com

**CATHLEEN MORTON PHR \***

HR MANAGER  
CELERION  
PO BOX 80837  
LINCOLN, NE 68501-0837  
402.437.0592  
cathleen.morton@celerion.com

**MISTY MUFF \***

HUMAN RESOURCES DIRECTOR  
YMCA OF LINCOLN NEBRASKA  
570 FALLBROOK BLVD.  
SUITE 210  
LINCOLN, NE 68528  
402.434.9204  
mmuff@ymcalincoln.org

**STEVE NARANS \***

PRINCIPAL  
SILVERSTONE GROUP  
11516 MIRACLE HILLS DRIVE  
OMAHA, NE 68154  
402.964.5400  
snarans@ssgi.com

**KAREN NEAL**

DIRECTOR OEM BUSINESS, & HUMAN  
RESOURCES  
KAWASAKI MOTORS MFG CORP USA  
PO BOX 81469  
6600 NW 27TH STREET  
LINCOLN, NE 68501-1469  
402.476.6600  
kneal@lcn.kmmfg.com



**LISA NEDDENRIEP \***

HR COORDINATOR  
INTEGRATED LIFE CHOICES  
2100 MAGNUM CIRCLE, SUITE 7  
LINCOLN, NE 68522  
402.742.0311  
lneddenriep@integratedlifechoices.com

**SHERI NEEMAN CSP PHR \***

PRODUCTION MANAGER  
ADVANTAGE PERSONNEL INC  
630 NORTH COTNER STE 100  
LINCOLN, NE 68505  
402.466.4994  
sherin@advantagestaffing.com

**BRITTANY NIELSEN**

PAYROLL & BENEFITS SPECIALIST  
NELNET  
121 S 13TH STREET  
SUITE 201  
LINCOLN, NE 68508  
402.458.2792  
brittany.nielsen@nelnet.net

**S JEAN NIEMANN PHR \***

HUMAN RESOURCES MANAGER  
USDA/NRCS  
100 CENTENNIAL MALL NORTH  
FEDERAL BUILDING ROOM 143  
LINCOLN, NE 68508-3866  
402.437.4058  
jean.niemann@ne.usda.gov

**RYAN NORRIS \***

HUMAN RESOURCE COORDINATOR  
NEBRASKA BOOK COMPANY  
4700 S 19TH STREET  
LINCOLN, NE 68501  
402.421.7300  
rnmorris@nebook.com

**ELIZABETH OLSON PHR \***

HUMAN RESOURCE/SAFETY DIRECTOR  
GOODWILL INDUSTRIES  
2100 JUDSON  
LINCOLN, NE 68521  
402.438.2022  
beth@lincolngoodwill.org

**LAURIE OXLEY PHR \***

HR SPECIALIST  
NEBRASKA BOOK COMPANY  
4700 S 19TH STREET  
LINCOLN, NE 68501  
402.421.7300  
loxley@nebook.com

**JASON PACL PHR**

HR MANAGER  
SECURITAS SECURITY SERVICES  
770 N COTNER BLVD  
SUITE A400  
LINCOLN, NE 68505-2344  
402.488.9011  
jason.pacl@securitasinc.com

**MELISSA PALMER**

HUMAN RESOURCE COORDINATOR  
LINCOLN ELECTRIC SYSTEM  
1040 O STREET  
PO BOX 80869  
LINCOLN, NE 68501  
402.467.6816  
mpalmer@les.com

**MARK PANKOKE SPHR \***

HUMAN RESOURCES MANAGER  
MADONNA REHABILITATION HOSPITAL  
5401 SOUTH STREET  
LINCOLN, NE 68506  
402.483.9595  
mpankoke@madonna.org

**SANDRA PARR \***

HUMAN RESOURCE GENERALIST  
FOUNDATION FOR EDUCATIONAL  
SERVICES  
1300 O STREET  
LINCOLN, NE 68508  
402.479.6660  
sandyp@fes.org

**KERRY PAUP \***

EXECUTIVE ASSISTANT  
CRETE CARRIER CORP  
PO BOX 81228  
LINCOLN, NE 68501  
402.479.2038  
kpaup@cretecarrier.com

**JEANNE PENCE SPHR \***

HR MANAGER  
FARMLAND FOODS  
200 S 2ND STREET  
LINCOLN, NE 68508  
402.479.1304  
jeanne.pence@cooksham.com

**LAURA PETERSON PHR \***

HUMAN RESOURCES OFFICER  
FARMERS & MERCHANTS BANK  
PO BOX E  
MILFORD, NE 68405  
402.761.7616  
laurap@bankfmb.com

**PERRY PIRSCH**

ATTORNEY  
BERRY LAW FIRM  
2650 N 48TH STREET  
LINCOLN, NE 68528  
402.466.8444  
Perry@jsberrylaw.com

**TRACY PLAUTZ**

EMPLOYMENT COORDINATOR  
TABITHA HEALTH CARE SERVICES  
4720 RANDOLPH  
LINCOLN, NE 68510  
402.486.8522  
tracyp@tabitha.org

**JOI POOL PHR \***

INTERNAL/HR MANAGER  
FBG SERVICE CORP.  
5820 COLFAX AVENUE  
LINCOLN, NE 68507  
4.2.467.1108  
jpool@fbgservices.com

**SHERLA POST \***

SENIOR VP HUMAN RESOURCES &  
TALENT MGMT  
CORNUSKER BANK  
1101 CORNHUSKER HWY  
P.O. BOX 80009  
LINCOLN, NE 68501-0009  
402.436.2413  
sherlap@cornhuskerbank.com

**DIXIE POTTER**

PAYROLL & BENEFITS SPECIALIST  
NELNET  
121 S 13TH STREET  
SUITE 201  
LINCOLN, NE 68508  
402.323.4631  
dixie.potter@nelnet.net

**MELISSA PRICE PHR \***

HUMAN RESOURCE ASSISTANT  
MANAGER  
NEBRASKA BOOK COMPANY  
4700 S 19TH STREET  
LINCOLN, NE 68512  
402.421.0402  
mprice@nebook.com

**BONNI PULTE PHR \***

HR MANAGER  
HASTINGS STATE BANK  
201 SUN VALLEY BLD  
LINCOLN, NE 68528  
402.474.8443  
bonnip@hastingsstatebank.com

**CARA RAMAEKERS \***

EMPLOYMENT COORDINATOR  
BRYANLGH HEALTH SYSTEM  
1600 S 48TH STREET  
LINCOLN, NE 68506  
402.481.8034  
cara.ramaekers@bryanlgh.org

**KELSEY RATHMAN**

HUMAN RESOURCE ASSISTANT  
COLLABORATIVE INDUSTRIES  
5701 THOMPSON CREEK BLVD  
SUITE 200  
LINCOLN, NE 68516  
402.435.2134  
krathman@cii.us.com

**DANA RAUTENBACH PHR**

HUMAN RESOURCE MANAGER  
MBA POULTRY  
333 S 3RD STREET  
TECUMSEH, NE 68450  
402.335.2501  
danarautenbach@smartchicken.com

**TRISH REIMERS SPHR \***

DIRECTOR OF HUMAN RESOURCES  
MBA POULTRY  
13151 DOVERS STREET  
WAVERLY, NE 68462  
402.786.1060  
trishreimers@smartchicken.com

**TINA RHODE PHR \***

HUMAN RESOURCE DIRECTOR  
CEDARS YOUTH SERVICES  
6601 PIONEERS BLVD  
SUITE 1  
LINCOLN, NE 68506  
402.437.8818  
tmrhode@cedars-kids.org

**KATIE RHONE**

TALENT SPECIALIST  
LI-COR BIOSCIENCES  
4647 SUPERIOR STREET  
LINCOLN, NE 68504  
402.467.0874  
katie.rhone@licor.com

**JEANNE RIHA**

DIRECTOR OF  
ACCOUNTING/CONTROLLER  
BIO-ELECTRONICS  
3255 SALT CREEK CIRCLE  
SUITE 200  
LINCOLN, NE 68504  
402.742.8168  
jriha@bio-electronics.com

**KELLY RILEY PHR \***

CLARION GROUP, INC.  
1338 SOUTH 202ND ST  
EAGLE, NE 68347-2012  
402.540.7130  
kelly@clarion-group.net

**RUSS ROBERTS SPHR \***

HUMAN RESOURCES DIRECTOR  
FAMILY SERVICE  
501 SOUTH 7TH STREET  
LINCOLN, NE 68508-2920  
402.441.7949  
rroberts@familyservicelincn.org

**MARCIA ROBERTS SPHR \***

HR CONSULTANT  
RESOURCE CAPITAL SERVICES  
366 196TH ROAD  
SUITE 201  
PLEASANT DALE, NE 68423  
402.641.9025  
troddo@iname.com

**KELLY ROBERTS PHR \***

HR SPECIALIST  
CONCORD ENTERPRISES INC  
1701 WINDHOEK DRIVE  
LINCOLN, NE 68512  
402.421.2551  
kroberts@concordei.com

**MELISSA ROGERS**

HUMAN RESOURCE COORDINATOR  
FRIENDSHIP HOME  
P O BOX 85358  
LINCOLN, NE 68501-5358  
402.434.0165  
melissar@friendshiphome.org

**CINDY ROHLMEIER**

HUMAN RESOURCES SPECIALIST  
MADONNA REHABILITATION HOSPITAL  
5401 SOUTH STREET  
LINCOLN, NE 68506  
402.483.9814  
crohlmeier@madonna.org

**FRANK ROMANO**

EXECUTIVE DIRECTOR OF HR  
CONCORD HOSPITALITY  
1701 WINDHOEK DRIVE  
LINCOLN, NE 68542  
402.419.2012  
fromano@concordei.com

**KATHY ROWOLDT**

ADMINISTRATOR  
CLARK JEARY RETIREMENT  
COMMUNITY  
8401 S 33RD STREET  
LINCOLN, NE 68516  
402.489.0331  
kathy.rowoldt@clarkjeary.com

**DEBBIE RUSSNOGLE**  
HUMAN RESOURCES MANAGER  
NEBRASKA BOILER  
6940 CORNHUSKER HIGHWAY  
LINCOLN, NE 68507  
402.434.2054  
drussnogle@neboiler.com

**LORI SAALE**  
PEOPLE RESOURCES MANAGER  
LINCOLN INDUSTRIES  
600 WEST E STREET  
LINCOLN, NE 68522  
402.473.2120  
lori.saale@lincolnindustries.com

**REBA SCHAFER**  
HUMAN RESOURCES  
TELESIS, INC.  
729 Q STREET  
LINCOLN, NE 68508  
402.434.5981  
rschafer2@telesis-inc.com

**LORIE SCHERLING PHR \***  
PERSONNEL DIRECTOR  
LANCASTER MANOR  
1001 SOUTH STREET  
LINCOLN, NE 68502  
402.441.7101  
lnhr@extendedcarellc.com

**JOEL SCHERLING PHR \***  
HR ADMINISTRATOR  
NEBRASKA DEPARTMENT OF  
EDUCATION  
301 CENTENNIAL MALL SOUTH  
PO BOX 94987  
LINCOLN, NE 68509-4987  
402.471.4736  
joel.scherling@nebraska.gov

**HEIDI SCHLABACH \***  
HUMAN RESOURCE MANAGER  
BOSCH SECURITY SYSTEMS  
8601 E CORNHUSKER HWY  
LINCOLN, NE 68507  
402.467.5321  
heidi.schlabach@us.bosch.com

**SALLY SCHNEIDER PHR \***  
3724 TIMBERLINE COURT  
LINCOLN, NE 68506  
ds21950@alltel.net

**KOLBY SCHNEIDER PHR \***  
HR MANAGER  
COLLABORATIVE INDUSTRIES, INC.  
5701 THOMPSON CREEK BLVD  
SUITE 200  
LINCOLN, NE 68516  
402.435.2134  
kolbyschneider@gmail.com

**PAMELA SCHOONOVER \***  
FINANCIAL & BENEFITS MANAGER  
BAHR VERMEER & HAECKER  
440 N 8TH STREET  
SUITE 100  
LINCOLN, NE 68508-2294  
402.475.4551  
pschoonover@bvh.com

**DEANNA SCHULDEIS**  
HR EMP/EEO/ETHICS ADMINISTRATOR  
TELEDYNE ISCO, INC  
4700 SUPERIOR  
LINCOLN, NE 68504  
402.465.3724  
dschuldeis@teledyne.com

**BRIDGET SCHULZ \***  
HR/PAYROLL COORDINATOR  
NATIONAL RESEARCH CORPORATION  
1245 Q STREET  
LINCOLN, NE 68508  
402.475.2525  
BSchulz@NationalResearch.com

**DENICE SEARS**  
TRAINING SPECIALIST  
NEBRASKA DEPARTMENT OF ROADS  
1500 S 14TH STREET  
LINCOLN, NE 68529  
402.479.3656  
denice.sears@nebraska.gov

**LAURA SEARS \***

HUMAN RESOURCE DIRECTOR  
DOANE COLLEGE  
1014 BOSWELL  
CRETE, NE 68333  
402.826.6773  
laura.sears@doane.edu

**ANNA SECKMAN**

GRANTS MANAGER & BENEFITS  
ADMINISTRATOR  
NEBRASKA CHILDREN & FAMILIES  
FOUNDATION  
215 CENTENNIAL MALL SOUTH  
SUITE 200  
LINCOLN, NE 68508  
402.817.2012  
aseckman@nebraskachildren.org

**CHRISTINE SEDA SPHR \***

HUMAN RESOURCES MANAGER  
DHHS - HUMAN RESOURCES &  
DEVELOPMENT  
301 CENTENNIAL MALL S  
5TH FLOOR  
LINCOLN, NE 68509-5026  
402.471.9130  
christine.seda@nebraska.gov

**LINDSAY SELIG PHR \***

BENEFITS ADMINISTRATOR  
LINCOLN SURGICAL HOSPITAL  
1710 S 70TH STREET  
LINCOLN, NE 68506  
402.484.0921  
lselig@lincolnsurgery.com

**JERRY SELLENTIN SPHR, PhD \***

4911 S 71ST STREET  
LINCOLN, NE 68516  
402.484.8900  
jsellentint@windstream.net

**M. SUE SETTELL**

HR GENERALIST  
SERCO, INC.  
850 S STREET  
LINCOLN, NE 68508  
402.323.2314  
sue.settell@serco-na.com

**ANG SHAMBAUGH**

HR COORDINATOR  
AMERITAS LIFE INSURANCE  
5900 O STREET  
LINCOLN, NE 68510  
402.467.7456  
ashambaugh@ameritas.com

**MARY SHANAHAN \***

HUMAN RESOURCES ADMINISTRATOR  
STATE OF NEBRASKA  
DEPT HEALTH & HUMAN SERVICES  
301 CENTENNIAL MALL SOUTH  
LINCOLN, NE 68509-5026  
402.471.9240  
mary.shanahan@nebraska.gov

**RENEE SHEIL \***

SR ASSOCIATE/FINANCIAL  
COORDINATOR  
DAVIS DESIGN INC  
211 NORTH 14TH ST  
LINCOLN, NE 68508  
402.476.9700  
renee.sheil@davisdesign.com

**CHRIS SHERIDAN**

HRIS ANALYST  
BRYANLGH HEALTH SYSTEM  
1600 S 48TH STREET  
LINCOLN, NE 68506  
402.481.8619  
chris.sheridan@bryanlgh.org

**NANCY SHY PHR \***

DIRECTOR OF ADMINISTRATION  
EF JOHNSON TECHNOLOGIES  
3900 NW 12TH STREET  
SUITE 200  
LINCOLN, NE 68521  
402.479.8441  
nshy@efji.com

**JULIE SINGH PHR \***

HUMAN RESOURCES COORDINATOR  
TABITHA HEALTH CARE SERVICES  
4720 RANDOLPH STREET  
LINCOLN, NE 68510  
402.486.8556  
julies@tabitha.org

**SARA SKRETTA \***

DIRECTOR OF HR  
UNIVERSITY OF NEBRASKA  
FOUNDATION  
1010 LINCOLN MALL  
SUITE 300  
LINCOLN, NE 68508  
402.458.1100  
sskretta@nufoundation.org

**ANGELA SMATHERS \***

SENIOR ACCOUNT MANAGER  
CELEBRITY STAFFING  
770 N COTNER BLVD STE 325  
LINCOLN, NE 68505  
402.464.0600  
asmathers@celebritystaff.com

**HOLLY SMITH \***

HUMAN RESOURCES MANAGER  
MIDWEST WEB, INC  
4900 SUPERIOR  
LINCOLN, NE 68504  
402.464.6900  
hsmith@mwtpdm.com

**KELLI SMITH**

ASSISTANT DIRECTOR  
UNIVERSITY OF NEBRASKA - LINCOLN  
230 NEBRASKA UNION  
14TH & R STREETS  
LINCOLN, NE 68588-0451  
402.472.3145  
ksmith4@unl.edu

**RON SNYDER**

DIRECTOR CUSTOMIZED TRAINING  
SVCS  
SOUTHEAST COMMUNITY COLLEGE  
301 S 68TH STREET PL  
LINCOLN, NE 68510-2449  
402.437.2714  
rsnyder@southeast.edu

**JULIE SPADER PHR \***

HR DIRECTOR  
CHRISTIAN HERITAGE  
14880 OLD CHENEY ROAD  
LINCOLN, NE 68461  
402.421.5437  
julies@chne.org

**MICHELE SPADT PHR \***

HUMAN RESOURCE DIRECTOR  
LINCOLN SURGICAL HOSPITAL  
1710 S 70TH STREET  
LINCOLN, NE 68506  
402.484.9016  
mspadt@lincolnsurgery.com

**AMY SPELLMAN PHR \***

HR SPECIALIST II  
NEBRASKA DEPARTMENT OF  
EDUCATION  
PO BOX 94987  
LINCOLN, NE 68509-4987  
402.471.5027  
amy.spellman@nebraska.gov

**KATHY SPENCE \***

ADMINISTRATIVE ASSISTANT  
LOWER PLATTE SOUTH NATURAL RES  
DIST  
3125 PORTIA  
PO BOX 83581  
LINCOLN, NE 68501-3581  
402.476.2729  
kspence@lpsnrd.org

**DARCI SPENCE SPHR \***

REGIONAL HUMAN RESOURCE  
MANAGER  
GREENBRIER RAIL SERVICES  
4901 S 28TH STREET  
OMAHA, NE  
309.671.9140  
darci.spence@gbrx.com

**JILL STABERG \***

HUMAN RESOURCES MANAGER  
NE DEPT OF BANKING & FINANCE  
1230 O STREET, STE 400  
PO BOX 95006  
LINCOLN, NE 68509-5006  
402.471.4941  
jill.staberg@nebraska.gov

**BARB STANDAGE PHR \***

FINANCE DIRECTOR  
NEBRASKA COMMUNITY BLOOD BANK  
100 N 84TH STREET  
LINCOLN, NE 68505  
402.486.9421  
bstandage@don8bld.org

**KIMBERLY STEINER \***

ASSISTANT PROFESSOR  
UNION COLLEGE  
3800 S 48TH STREET  
LINCOLN, NE 68506  
402.486.2600  
kisteine@ucollege.edu

**KATHLEEN STEPHENSON CPCU**

CHIEF FINANCIAL OFFICER  
NE FARM BUREAU FEDERATION &  
AFFILIATED COMPANIES  
5225 S 16TH STREET  
LINCOLN, NE 68512  
402.421.4436  
kathys@nefb.org

**MINDE STONE GBA**

PEOPLE SERVICES ADMINISTRATOR  
LINCOLN INDUSTRIES  
600 WEST E STREET  
LINCOLN, NE 68522  
402.473.2128  
minde.stone@lincolnindustries.com

**PEGGY STORM \***

DIRECTOR OF HUMAN RESOURCES  
CHERRY HILL COMPANY/LEGACY  
RETIREMENT COMMUNITIES  
8101 O STREET, SUITE 100  
LINCOLN, NE 68510  
402.489.3387  
peggy@cherryhillcompany.net

**KARA STRONG CPC \***

SALES MANAGER  
AUREUS GROUP  
770 N COTNER STE 325  
LINCOLN, NE 68505-2377  
402.464.4488  
kstrong@aureusgroup.com

**MARCI STUREK PHR \***

HR COORDINATOR  
NEBRASKA HEART HOSPITAL  
7500 S 91ST STREET  
LINCOLN, NE 68526  
402.328.3636  
msturek@neheart.com

**JILL STUTZMAN**

DIRECTOR OF HUMAN RESOURCES  
RUNZA NATIONAL  
5931 SOUTH 58TH ST STE C  
LINCOLN, NE 68516-3640  
402.423.2394  
jstutzman@runzanational.com

**KAY SUDBECK**

DIRECTOR OF HUMAN RESOURCES  
SPEEDWAY MOTORS  
340 VICTORY LANE  
LINCOLN, NE 68528  
kmsudbeck@speedwaymotors.com

**SALLIE SVATORA \***

OPERATIONS MANAGER  
NE ASSN OF SCHOOL BOARDS  
1311 STOCKWELL  
LINCOLN, NE 68502  
402.423-4951  
ssvatora@nasbonline.org

**DANA SVOBODA**

HR GENERALIST  
KVC BEHAVIORAL HEALTHCARE  
5220 S 16TH STREET  
LINCOLN, NE 68512  
402.770.9441  
dsvoboda@kvc.org

**ALISHA SWANSON PHR \***  
HUMAN RESOURCE MANAGER  
NE ORTHOPAEDIC & SPORTS MEDICINE  
575 S 70TH STREET  
SUITE 200  
LINCOLN, NE 68510  
402.484.4030  
aswanson@nebraskaortho.com

**RYAN SWINTON**  
MIDLANDS FINANCIAL BENEFITS  
7101 S 82ND STREET  
LINCOLN, NE 68516  
402.434.8050  
rswinton@midfin.com

**JENNIFER TERMAAT**  
SENIOR RECRUITER  
NELNET  
121 S 13TH STREET  
SUITE 201  
LINCOLN, NE 68508  
402.458.2275  
jennifer.termaat@nelnet.net

**CHAD THIES**  
HUMAN RESOURCES MANAGER  
UNION BANK & TRUST COMPANY  
6811 S 27<sup>TH</sup> STREET  
LINCOLN, NE 68516  
402.323.1664  
chad.thies@ubt.com

**CINDY THOMSON SPHRCEBS FLMI  
CCP\***  
HR MANAGER - COMP & BENEFITS  
AMERITAS LIFE INSURANCE CORP  
PO BOX 81889  
LINCOLN, NE 68501-1889  
402.467.7256  
cthompson@ameritas.com

**KATHERINE TIMMINS \***  
OFFICE ADMINISTRATOR  
SOFTWARE TECHNOLOGY, INC.  
1621 CUSHMAN DRIVE  
LINCOLN, NE 68512  
402.423.1440  
ktimmings@tabs3.com

**SHELLY TOLLE**  
PLACEMENT SPECIALIST  
SOUTHEAST COMMUNITY COLLEGE  
600 STATE STREET  
MILFORD, NE 68405  
402.761.8242  
stolle@southeast.edu

**SHERRI TOOHEY**  
OFFICE MANAGER  
WOODS & AITKEN, LLP  
301 S 13TH STREET  
SUITE 500  
LINCOLN, NE 68508  
402.437.8540  
stoohey@woodsaitken.com

**JANICE TOOKER**  
EXECUTIVE ASSISTANT  
NEBRASKA HOSPICE AND PALLIATIVE  
CARE ASSN.  
3900 NW 12TH STREET  
SUITE 100  
LINCOLN, NE 68521  
402.477.0204  
jan@nehospice.org

**HEIDI TREPTOW**  
HR SUPERVISOR  
KAWASAKI MOTORS MFG CORP USA  
6600 NW 27TH STREET  
LINCOLN, NE 68524  
402.476.6600  
HTreptow@LCN.KMMFG.com

**ANGELA TUCCI**  
CORPORATE SECRETARY  
TELESIS, INC.  
729 Q STREET  
LINCOLN, NE 68508  
402.434.5964  
atucci@telesis-inc.com

**KATHY VANDENBERG**  
PERSONNEL OFFICER  
STATE OF NEBRASKA  
941 O ST STE 400  
LINCOLN, NE 68508-3625  
402.471.2207  
kathy.vandenberg@nebraska.gov



**CHERYL VAVRA \***

HUMAN RESOURCES MANAGER  
LINCOLN HOUSING AUTHORITY  
5700 R STREET  
PO BOX 5327  
LINCOLN, NE 68505-2332  
402.434.5549  
cheryl\_vavra@L-housing.com

**KAREN VOGEL PHR \***

EMPLOYMENT COORDINATOR  
BRYANLGH HEALTH SYSTEM  
1600 SOUTH 48TH ST  
LINCOLN, NE 68506  
402.481.8185  
karen.vogel@bryanlgh.org

**CAROLYN VOGELE PHR \***

HUMAN RESOURCES MANAGER  
NEAPCO INC  
501 WEST SARGENT STREET  
BEATRICE, NE 68310  
402.228.4288  
cvogele@neapco.com

**SHARON WADE \***

VERIZON WIRELESS  
4600 INNOVATION DRIVE  
LINCOLN, NE 68521  
Sharon.Wade@VerizonWireless.com

**TONYA WAGNER**

HUMAN RESOURCES ASSISTANT  
NEBRASKA MILITARY DEPARTMENT  
1300 MILITARY ROAD  
LINCOLN, NE 68508  
402.309.7129  
tonya.wagner@us.army.mil

**MICHAEL WALKOWIAK MAS PHR \***

SR HR SUPERVISOR  
MOLEX  
700 KINGBIRD ROAD  
LINCOLN, NE 68521-3000  
402.458.8335  
mwalkowiak@molex.com

**TIM WASHBURN**

EXPRESS EMPLOYMENT  
PROFESSIONALS  
4955 O STREET  
SUITE C  
LINCOLN, NE 68510  
402.420.5800  
tim.washburn@expresspros.com

**DIANE WATERS**

HR MANAGER  
CELERION  
621 ROSE STREET  
LINCOLN, NE 68502  
402.437.4767  
diane.waters@celerion.com

**JILL WATKINS CIR CDR \***

HUMAN CAPITAL MANAGEMENT  
COORDINATOR  
LINCOLN ELECTRIC SYSTEM  
2620 FAIRFIELD STREET  
LINCOLN, NE 68521  
402.467.6812  
jwatkins@les.com

**JANE WEDDLE MA CBA**

SENIOR PERFORMANCE  
CONSULTANT/COACH  
WEDDLE PERFORMANCE GROUP  
2445 CALVERT ST  
LINCOLN, NE 68502  
402.429.5224  
jweddle@neb.rr.com

**JEANETTE WELLSANDT SPHR FLMI  
ACS \***

VICE PRESIDENT HUMAN RESOURCES  
LINCOLN BENEFIT LIFE / ALLSTATE  
FINANCIAL  
2920 S 84TH ST  
LINCOLN, NE 68506  
402.328.5790  
wellsjpe@allstate.com

**JOYCE WELSCH JD SPHR \***

HR MANAGER  
NEBRASKA DEPARTMENT OF LABOR  
550 S 16TH STREET  
LINCOLN, NE 68509  
402.471.4957  
joyce.welsch@nebraska.gov

**TRACY WESELY PHR \***

HR SUPERVISOR  
TRACTOR SUPPLY  
12851 DOVERS STREET  
WAVERLY, NE 68462  
402.786.6107  
twesely@TractorSupply.com

**SARA WHITE \***

HR REPRESENTATIVE  
STATE FARM INSURANCE  
222 S 84TH STREET  
LINCOLN, NE 68506  
402.327.5750  
sara.white.quoz@statefarm.com

**KELLY WHITE \***

2930 FLETCHER AVENUE  
#151  
LINCOLN, NE 68504  
402.560.1107  
kellyk3power@aol.com

**TIMOTHY WIEDMAN PHR**

ASST PRO OF MGMT HR  
DOANE COLLEGE  
1014 BOSWELL AVENUE  
CRETE, NE 68333  
402.826.8537  
timothy.wiedman@doane.edu

**CARMEN WILES SPHR \***

SENIOR HUMAN RESOURCES ADVISOR  
NRECA  
PO BOX 6249  
LINCOLN, NE 68506-0249  
402.483.9275  
carmen.wiles@nreca.coop

**LIISA WILKINS \***

DIRECTOR OF HUMAN RESOURCES  
COMMERCIAL INVESTMENT  
PROPERTIES  
8020 O STREET  
LINCOLN, NE 68510  
402.436.3404  
liisa@rentcip.com

**CRAIG WILLEKE**

PRESIDENT  
WILLEKE FINANCIAL GROUP, LLC  
8700 EXECUTIVE WOODS DRIVE  
SUITE 400  
LINCOLN, NE 68512  
402.483.6656  
craig@willekefinancialgroup.com

**BRIAN WILLET CMFC**

DISTRICT MANAGER  
WADDELL AND REED  
1001 S 70TH STREET  
SUITE 201  
LINCOLN, NE 68510  
402.484.7526  
bwillet@wradvisors.com

**LYNN WILLEY**

PLACEMENT SPECIALIST  
SOUTHEAST COMMUNITY COLLEGE  
8800 O STREET  
LINCOLN, NE 68520-1299  
402.437.2622  
lwilley@southeast.edu

**GLENN WILLIAMS**

HUMAN RESOURCES MANAGER  
STATE FARM INSURANCE  
222 SOUTH 84TH ST  
LINCOLN, NE 68510-2605  
402.327.5216  
glenn.l.williams.bph1@statefarm.com

**LAURA WILLIAMS**

BENEFITS / HR COORDINATOR  
TABITHA HEALTH CARE SERVICES  
4720 RANDOLPH ST  
LINCOLN, NE 68510  
402.486.8544  
lauraw@tabitha.org

**ROBERT WILLIAMS**

HR SPECIALIST  
LESTER ELECTRICAL  
625 WEST A STREET  
LINCOLN, NE 68522  
402.441.3720  
bobwi@lesterelectrical.com

**BOBBIE WILSON SPHR \***

HR PROGRAM MANAGER  
BRYANLGH MEDICAL CENTER  
1600 S 48TH STREET  
LINCOLN, NE 68506-1299  
402.481.3769  
bobbie.wilson@bryanlgh.org

**SHERRI WIMES SPHR \***

SECOND VP HUMAN RESOURCES  
AMERITAS LIFE INSURANCE CORP  
5900 O STREET  
LINCOLN, NE 68510  
402.467.7377  
swimes@ameritas.com

**CHRISTINE WISNIESKI**

HR REPRESENTATIVE  
STATE FARM  
222 S 84TH STREET  
LINCOLN, NE 68510  
402.327.5123  
christine.wisnieski.nwp@statefarm.com

**CINDY WOOD**

HUMAN RESOURCES MANAGER  
NE DEPT OF ENVIRONMENTAL QUALITY  
1200 N STREET  
SUITE 400  
LINCOLN, NE 68508  
402.471.2758  
cindy.wood@nebraska.gov

**SHERYL WRIGHT CM \***

DIRECTOR HUMAN RESOURCES  
TELEDYNE ISCO, INC  
PO BOX 82531  
4700 SUPERIOR  
LINCOLN, NE 68504  
402.465.3029  
swright@teledyne.com

**KATHY WUDEL PHR**

HR MANAGER/OFFICE ADMINISTRATOR  
WOLFE SNOWDEN HURD LUERS & AHL  
1248 O STREET, SUITE 800  
WELLS FARGO CENTER  
LINCOLN, NE 68508  
402.474.1507  
kwudel@wolfesnowden.com

**YAN YANG**

HUMAN RESOURCES ANALYST  
TRI-CON INDUSTRIES, LTD.  
4000 NW 44TH STREET  
LINCOLN, NE 68524  
402.470.3311  
yan\_yang@tstna.com

**KIM YOUNG**

RECEPTIONIST/HR ASSISTANT  
UNION BANK & TRUST CO.  
6811 S 27TH STREET  
LINCOLN, NE 68516  
402.323.1108  
kim.young@ubt.com

**SARAH ZACH \***

HUMAN RESOURCES ADMINISTRATOR  
RUNZA NATIONAL  
PO BOX 6042  
LINCOLN, NE 68506  
402.423.2394  
szach@runzanational.com

**MELISSA ZAHOUREK PHR**

HUMAN RESOURCES SENIOR  
SPECIALIST  
AMERITAS LIFE INSURANCE CORP  
5900 O STREET  
LINCOLN, NE 68510  
402.467.7162  
mzahourek@ameritas.com

**SARAH ZELENDA**

HR COORDINATOR  
AMERITAS LIFE INSURANCE CORP  
PO BOX 81889  
LINCOLN, NE 68501  
402.467.7753  
szelenda@ameritas.com

**DAVE ZELNIO PHR**

VICE PRESIDENT  
NEWS LINK  
1845 S 11TH STREET  
LINCOLN, NE 68502  
402.304.0086  
dave@newslink.com

**DANIELLE ZEMLICKA**

HR MANAGER  
VERIZON WIRELESS  
4600 INNOVATION DRIVE  
LINCOLN, NE 68521  
402.473.6614  
danielle.zemlicka@verizonwireless.com

**LINDA ZIMMERMAN PHR \***

DIRECTOR HUMAN RESOURCES  
CELERION  
PO BOX 80837  
LINCOLN, NE 68501-0837  
402.437.4958  
linda.zimmerman@celerion.com

**RENAE ZIMMERMAN**

HR GENERALIST  
PATHOLOGY MEDICAL SERVICES  
5440 SOUTH STREET  
SUITE 200  
LINCOLN, NE 68506  
402.465.1920  
zimmermanr@pmspc.org

# LHRMA Membership Roster

## *By Company Affiliation*

*\*Denotes member of Society for Human Resource Management (SHRM)*

---



---

<b>ADVANCE SERVICES, INC.</b>	DAVE	HUNT	402.328.0142
	KENDRA	KNAUSS	402.435.5676
	CINDY	MILLER	402.328.0142
<b>ADVANTAGE PERSONNEL INC</b>	SHERI	NEEMAN	* 402.466.4994
<b>AIM INSTITUTE</b>	ROD	ARMSTRONG	402.323.0703
	YOLANDA	ELEDGE	402.345.5025
<b>ALFRED BENESCH &amp; CO. ALN MEDICAL MANAGEMENT INC</b>	CONNIE	LAUGHLIN	402.479.2432
<b>AMERITAS LIFE INSURANCE CORP</b>	KENDA	FINK	* 402.486.7118
	MARY LOU	BURNS	* 402.309.2303
	CINDY	EBERSPACHER	* 402.467.7167
	JEAN	JOHNSON	402.309.2559
	KENT	MATTSON	* 402.467.7160
	BARB	McINTYRE	* 402.467.7161
	ANG	SHAMBAUGH	402.467.7456
	CINDY	THOMSON	* 402.467.7256
	SHERRI	WIMES	* 402.467.7377
	MELISSA	ZAHOUREK	402.467.7162
	SARAH	ZELENDIA	402.467.7753
<b>ASSURITY LIFE INSURANCE COMPANY</b>	SUSAN	BECKER	* 402.437.4324
<b>AUREUS GROUP</b>	NATE	ELGERT	402.464.4488
	KARA	STRONG	* 402.464.4488
<b>BAHR VERMEER &amp; HAECKER</b>	PAMELA	SCHOONOVER	* 402.475.4551
<b>BAILEY LAUERMAN BAYLOR EVNEN CURTISS GRIMIT &amp; WITT, LLP</b>	KAREN	HENRICKSEN	* 402.475.2800
	SHARON	FENN	402.475.1075
<b>BERRY LAW FIRM</b>	PERRY	PIRSCH	402.466.8444
<b>BEST CARE EAP</b>	LESA	DEEKER	402.354.8000
<b>BIO-ELECTRONICS</b>	JEANNE	RIHA	402.742.8168
<b>BOCKMANN, INC.</b>	CHRIS	BOCKMANN	402.423.6631
<b>BOSCH SECURITY SYSTEMS</b>	HEIDI	SCHLABACH	* 402.467.5321
<b>BRYANLGH HEALTH SYSTEM</b>	RON	ANDERSON	* 402.481.8618

<b>BRYANLGH HEALTH SYSTEM</b>	PEGGY	CHANTRY	*	402.481.5780
	AARON	DELAHOYDE	*	402.481.3167
	COLLEEN	EICKMEIER	*	402.481.5701
	GREGORY	HOWELL	*	402.481.8614
	DOUG	MCDANIEL	*	402.481.8616
	CARA	RAMAEKERS	*	402.481.8034
	CHRIS	SHERIDAN		402.481.8619
	KAREN	VOGEL	*	402.481.8185
<b>BUNGE MILLING</b>	BOBBIE	WILSON	*	402.481.3769
	LARRY	KOERNER	*	402.826.8039
<b>CABELA'S INC</b>	NANCY	CONWAY	*	402.323.4447
	SUSAN	CROCKER		402.323.4444
	JUDY	FISCHER		402.323.4448
<b>CAMERON GENERAL CONTRACTORS/RESORT LIFESTYLE COMM CAPITAL CITY CONCEPTS LLC</b>	GEORGIA	GLASS	*	402.420.2311
	PAUL	ESSMAN	*	402.475.4994
<b>CEDARS YOUTH SERVICES</b>	JUDY	MILLER		402.437.8810
	TINA	RHODE	*	402.437.8818
<b>CELEBRITY STAFFING</b>	ELIZABETH	AMBRI		402.464.0600
	ANGELA	SMATHERS	*	402.464.0600
<b>CELERION</b>	CATHLEEN	MORTON	*	402.437.0592
	DIANE	WATERS		402.437.4767
	LINDA	ZIMMERMAN	*	402.437.4958
	TAMI	LEWIS-AHRENDT	*	402.475.8717
<b>CENTERPOINTE, INC. CHERRY HILL COMPANY/LEGACY RETIREMENT COMMUNITIES</b>	PEGGY	STORM	*	402.489.3387
	JULIE	SPADER	*	402.421.5437
<b>CHRISTIAN HERITAGE CITY OF LINCOLN / LANCASTER COUNTY</b>	PATRICIA	KANT	*	402.441.7880
	MARK	KOLLER	*	402.441.7888
	KELLY	RILEY	*	402.540.7130
<b>CLARION GROUP, INC. CLARK JEARY RETIREMENT COMMUNITY COLLABORATIVE INDUSTRIES, INC.</b>	KATHY	ROWOLDT		402.489.0331
	KELSEY	RATHMAN		402.435.2134
	KOLBY	SCHNEIDER	*	402.435.2134
<b>COLLEGE OF SAINT MARY COMMERCIAL INVESTMENT PROPERTIES</b>	DENICE	ARCHER		402.489.2900
	LIISA	WILKINS	*	402.436.3404

COMPANY CARE	JOANNE	BARTELS		402.475.6656
CONCORD ENTERPRISES	JONNIE	MEINTS		402.421.2551
	KELLY	ROBERTS	*	402.421.2551
CONCORD HOSPITALITY	FRANK	ROMANO		402.419.2012
CONCORDIA UNIVERSITY	CONNIE	BUTLER	*	402.643.7332
CONTINENTAL WESTERN GROUP	DEBORAH	BERG		402.423.7688
	JENNIFER	CHARTIER	*	402.421.4331
CONTINUUM EMPLOYEE ASSISTANCE	GEORGETTE	KINGKADE	*	402.476.0186
	SUSAN	MERWICK		402.476.0186
COOK'S HAM INC	STACY	CHRISTMANN	*	402.479.1302
COOPER NUCLEAR STATION	KIM	ANVILLE	*	402.825.2890
	MESHELLE	FERGUSON	*	402.825.5301
CORNUSKER BANK	SHERLA	POST	*	402.436.2413
CRETE CARRIER CORP	JANE	GOERTZEN	*	402.479.7064
	KERRY	PAUP	*	402.479.2038
	ELIZABETH	COKER		402.479.8757
DAVIS DESIGN INC	RENEE	SHEIL	*	402.476.9700
DEVELOPMENTAL SERVICES OF NEBRASKA	BRADLEY	FUCHS		402.325.8555
DHHS - HUMAN RESOURCES & DEVELOPMENT	CHRISTINE	SEDA	*	402.471.9130
		HASEMANN-HERBERT	*	402.434.2900
DIRECTIONS EAP, LLC	KARI	HERBERT	*	402.434.2900
DISTRIBUTION INC	KATHIE	DRAGOO		402.467.4585
DOANE COLLEGE	LAURA	SEARS	*	402.826.6773
	TIMOTHY	WIEDMAN		402.826.8537
DUNCAN AVIATION	TAMMIE	BURNS	*	402.479.1658
	MICHAEL	COX		402.479.4298
	JOE	HUFFMAN, JR	*	402.475.2611
EASTMONT TOWERS	CINDY	MEFFORD	*	402.486.2221
EF JOHNSON				
TECHNOLOGIES	NANCY	SHY	*	402.479.8441
EXPERIAN	BONNIE	HATTERMAN		402.473.4864
EXPRESS EMPLOYMENT PROFESSIONALS	TIM	WASHBURN		402.420.5800
EYE CARE SPECIALTIES	KIM	MILLER		402.420.2020
FACTS/NELNET BUSINESS SOLUTIONS	JANICE	HARPER	*	402.466.1063
	AMBER	LANNIN		402.466.1063
FAMILY SERVICE	VEDA	ARMSTRONG		402.441.7949

<b>FAMILY SERVICE (CON'T)</b>	RUSS	ROBERTS	*	402.441.7949
<b>FARMERS &amp; MERCHANTS BANK</b>	LAURA	PETERSON	*	402.761.7616
<b>FARMERS MUTUAL INSURANCE CO OF NE</b>	DIXIE	DAVIS	*	402.434.8360
	KRISTI	HERMAN		402.434.8361
<b>FARMLAND FOODS</b>	JEANNE	PENCE	*	402.479.1304
<b>FBG SERVICE CORP.</b>	JOI	POOL	*	4.2.467.1108
<b>FIRST STATE BANK</b>	PAULA	HALL	*	402.858.1190
	MIRANDA	HOBELMAN		402.421.3535
	JEFF	KANGER		402.421.3535
<b>FOUNDATION FOR EDUCATIONAL SERVICES</b>	SANDRA	PARR	*	402.479.6660
<b>FRIENDSHIP HOME</b>	MELISSA	ROGERS		402.434.0165
<b>GALLUP</b>	SCOTT	DANIELL		402.325.2224
<b>GOODWILL INDUSTRIES</b>	ELIZABETH	OLSON	*	402.438.2022
<b>GREAT WESTERN BANK</b>	GINNA	CLAUSSEN		402.473.6226
<b>GREENBRIER RAIL SERVICES</b>	DARCI	SPENCE	*	309.671.9140
<b>GT EXHAUST</b>	ANDREW	BOELLSTORFF		402.323.7279
	JANET	CROW		402.323.7294
<b>HASTINGS STATE BANK</b>	TERI	MATTRAN		402.474.8440
	BONNI	PULTE	*	402.474.8443
<b>HBE BECKER MEYER LOVE, LLP</b>	KIMBERLY	BOWERS	*	402.423.4343
<b>HEARTLAND BIG BROTHERS BIG SISTERS</b>	CHRIS	GALLENTINE	*	402.464.2227
<b>HOLIDAY INN DOWNTOWN</b>	ANGELA	FINCH		402.475.4011
<b>HUGHES BROTHERS</b>	CHANTEL	DENKER	*	402.634.2991
<b>INTEGRATED LIFE CHOICES</b>	LISA	NEDDENRIEP	*	402.742.0311
<b>KAWASAKI MOTORS MFG CORP USA</b>	MICHELLE	EUREK		402.476.6600
	KAREN	NEAL		402.476.6600
	HEIDI	TREPTOW		402.476.6600
<b>KENEXA TECHNOLOGY INC</b>	MARSHA	DREESEN	*	402.419.5301
<b>KVC BEHAVIORAL HEALTHCARE</b>	DANA	SVOBODA		402.770.9441
<b>LAIRD TECHNOLOGIES</b>	JULIE	CAVE	*	402.325.3249
<b>LANCASTER COUNTY COURT</b>	BECKY	BRUCKNER		402.441.7295
<b>LANCASTER MANOR</b>	LORIE	SCHERLING	*	402.441.7101
<b>LANDSCAPES UNLIMITED</b>	RHONDA	MCGINNIS	*	402.420.8250



LEGISLATIVE COUNCIL	JUDITH	BACKHAUS	*	402.471.0766
LENCO PMC	LADONNA	HUMPHREY	*	402.786.2000
LESTER ELECTRICAL	LAURI	EARHART		402.441-3720
	RENEE	HENRICH		402.441.3720
	ROBERT	WILLIAMS		402.441.3720
LI-COR BIOSCIENCES	KATIE	RHONE		402.467.0874
	JANE	FLYNN		402.467.3576
LINCOLN ACTION PROGRAM	STEPHEN	LANGDON	*	402.471.4515
LINCOLN BENEFIT LIFE / ALLSTATE FINANCIAL	JEANETTE	WELLSANDT	*	402.328.5790
LINCOLN CHILDREN'S MUSEUM	CATIA	GUERRERO		402.477.4000
LINCOLN ELECTRIC SYSTEM	CINDY	BOOZE		402.473.3217
	MELISSA	PALMER		402.467.6816
	JILL	WATKINS	*	402.467.6812
LINCOLN HOUSING AUTHORITY	MARILYN	CRAWFORD		402.434.5550
	CHERYL	VAVRA	*	402.434.5549
LINCOLN INDUSTRIES	MICHELLE	KERSHAW		402.473.2163
	DAN	KRICK	*	402.473.4372
	LORI	SAALE		402.473.2120
	MINDE	STONE		402.473.2128
LINCOLN JOURNAL STAR	SHAWNA	HILBERT	*	402.473.7412
	SUSAN	MARTIN		402.473.7121
LINCOLN MEDICAL EDUCATION PARTNERSHIP	KATHY	HARPER	*	402.483.4581
LINCOLN ORTHOPAEDIC CENTER PC	NICK	ANDERSON	*	402.436.2901
LINCOLN POULTRY	ELKE	HESSER		402.437.3331
LINCOLN PUBLIC SCHOOLS	KEN	BABCOCK		402.436.1571
LINCOLN REGIONAL CENTER	LISA	HOLZ		402.479.5415
LINCOLN SURGICAL HOSPITAL	LINDSAY	SELIG	*	402.484.0921
	MICHELE	SPADT	*	402.484.9016
LOWER PLATTE SOUTH NATURAL RES DIST	KATHY	SPENCE	*	402.476.2729
LSI STAFFING	PATRICIA	CABEEN		402.261.6904
MADONNA REHABILITATION HOSPITAL	JANET	BAUER		402.483.9518
	WENDY	CHARLTON		402.483.9484
	ANGELA	KUGLER		402.483.9551
	LOU ANN	MANSKE	*	402.483.9588

<b>MADONNA REHABILITATION HOSPITAL (CON'T)</b>	MARK	PANKOKE	*	402.483.9595
	CINDY	ROHLMEIER		402.483.9814
<b>MANPOWER, INC.</b>	ANGELA	CALDWELL		402.484.5511
<b>MATHESON LINWELD</b>	LEAH	JONES	*	402.786.2161
<b>MBA POULTRY</b>	DANA	RAUTENBACH		402.335.2501
	TRISH	REIMERS	*	402.786.1060
<b>MI INDUSTRIES</b>	CARRIE	AREHART SILLS		402.466.8302
<b>MIDLANDS FINANCIAL BENEFITS</b>	JOSETTE	DALTON		402.434.8050
	RYAN	SWINTON		402.434.8050
<b>MIDLANDS PACKAGING CORP</b>	MARY	HINDS	*	402.464.9124
<b>MIDWEST TILE, MARBLE AND GRANITE, INC.</b>	AMANDA	HENRY	*	402.476.2542
<b>MIDWEST WEB, INC</b>	HOLLY	SMITH	*	402.464.6900
<b>MOLEX</b>	GREG	EDEN		402.458.8715
	ELLY	HARDEKOPF		402.458.8762
	MICHAEL	WALKOWIAK	*	402.458.8335
<b>NATIONAL RESEARCH CORPORATION</b>	BRIDGET	SCHULZ	*	402.475.2525
<b>NATIONWIDE INSURANCE</b>	TRISHA	MATEJKA		402.465.3427
<b>NE ADVOCACY SERVICES INC</b>	JUDY	GANOUNG	*	402.474.3183
<b>NE ASSN OF SCHOOL BOARDS</b>	SALLIE	SVATORA	*	402.423.4951
<b>NE BOOK COMPANY</b>	SERENITY	KINNEY		402.421.0422
<b>NE DEPARTMENT OF LABOR</b>	MILIJANA	ILIC		402.471.2377
<b>NE DEPT OF BANKING &amp; FINANCE</b>	JILL	STABERG	*	402.471.4941
<b>NE DEPT OF CORRECTIONAL SERVICES</b>	MARIAN	LAYMAN	*	402.479.5752
<b>NE DEPT OF ENVIRONMENTAL QUALITY</b>	CANDICE	BATENHORST		402.471.2758
	CINDY	WOOD		402.471.2758
<b>NE FARM BUREAU FEDERATION &amp; AFFILIATED COMPANIES</b>	KATHLEEN	STEPHENSON		402.421.4436
<b>NE HEART INSTITUTE</b>	JULIE	EILERS	*	402.328.3830
<b>NE HOSPITAL ASSOCIATION</b>	DAVID	BURD		402.742.8144
<b>NE ORTHOPAEDIC &amp; SPORTS MEDICINE</b>	ALISHA	SWANSON	*	402.484.4030
<b>NEAPCO INC</b>	CAROLYN	VOGELE	*	402.228.4288

NEBCO INC	LIN	BLODGETT	*	402.434.1743
NEBRASKA BANKERS ASSOCIATION	KAREN	MILLER		402.474.1555
NEBRASKA BOILER	DEBBIE	RUSSNOGLE		402.434.2054
NEBRASKA BOOK COMPANY	LORI	HEIN	*	402.421.0461
	RUTH	JONES	*	402.421.0464
	C DOUGLAS	MOORE	*	402.421.7300
	RYAN	NORRIS	*	402.421.7300
	LAURIE	OXLEY	*	402.421.7300
	MELISSA	PRICE	*	402.421.0402
NEBRASKA CHILDREN & FAMILIES FOUNDATION	ANNA	SECKMAN		402.817.2012
NEBRASKA COMMUNITY BLOOD BANK	MELISSA	CARPENTER	*	402.486.9424
	BARB	STANDAGE	*	402.486.9421
NEBRASKA DEPARTMENT OF EDUCATION	JOEL	SCHERLING	*	402.471.4736
	AMY	SPELLMAN	*	402.471.5027
NEBRASKA DEPARTMENT OF LABOR	JOYCE	WELSCH	*	402.471.4957
NEBRASKA DEPARTMENT OF ROADS	DENICE	SEARS		402.479.3656
NEBRASKA HEART HOSPITAL	MARCI	STUREK	*	402.328.3636
NEBRASKA HOSPICE AND PALLIATIVE CARE ASSN.	JANICE	TOOKER		402.477.0204
NEBRASKA LABLINC	JACKIE	AMOS		402.465.1978
NEBRASKA MILITARY DEPARTMENT	TONYA	WAGNER		402.309.7129
NEBRASKA SAFETY COUNCIL	TERRY	HOLT		402.483.2511
	LAURIE	KLOSTERBOER	*	402.483.2581
NEBRASKA STATE PATROL	JERRY LEE	JENSEN	*	402.479.4904
NEBRASKA WESLEYAN UNIVERSITY	NANCY	COOKSON	*	402.465.2117
	LARRY	HUGHES		402.465.2204
NELNET	AMANDA	BECKER	*	402.458.2782
	SARAH	CHAPMAN		402.323.4641
	TEENA	KESLAR		402.458.3046
	BRITTANY	NIELSEN		402.458.2792
	DIXIE	POTTER		402.323.4631
	JENNIFER	TERMAAT		402.458.2275

NELNET (CON'T)	CRYSTAL	MEYER		402.323.4611
NEWS LINK	DAVE	ZELNIO		402.304.0086
NMPP ENERGY	SARAH	JONES	*	402.474.4759
NOVARTIS CONSUMER HEALTH INC	BRIAN	EMMEL	*	402.467.8908
	ASHLEY	ARNER	*	402.467.8911
	BARBARA	BENES	*	402.467.8812
	DONNA	BLAKE	*	402.467.8802
	SUZANNE	DREW		402.467.8808
NRECA	CARMEN	WILES	*	402.483.9275
OLSSON ASSOCIATES PATHOLOGY MEDICAL SERVICES	LISA	ELGERT		402.458.5953
	RENAE	ZIMMERMAN		402.465.1920
	SARAH	KAHLER		402.465.1802
PERRY REID PROPERTIES PIONEER HI-BRED INTERNATIONAL, INC. PROFESSIONAL CHOICE RECOVERY	CAROL	JOHNSON	*	402.488.1666
	KATIE	MAYFIELD	*	402.328.4054
REGION V SYSTEMS	SHIELA	CAIN		402.476.3535
REMBOLT LUDTKE LLP RESOURCE CAPITAL SERVICES	KIM	MICHAEL	*	402.441.4350
RITCHIE BROS. AUCTIONEERS	MARK	FAHLESON		402.475.5100
	MARCIA	ROBERTS	*	402.641.9025
	SHIRLEY	DETTMER	*	402.421.0238
	TINA	ADAMS	*	402.421.0292
RUNZA NATIONAL	KRISTI	ANDERSON		402.423.2394
	JILL	STUTZMAN		402.423.2394
	SARAH	ZACH	*	402.423.2394
SAINT ELIZABETH HEALTH SYSTEMS	CODY	KOCH	*	402.219.7315
SAMPSON CONSTRUCTION SECURITAS SECURITY SERVICES	MICHELLE	LENNERS	*	402.434.5409
SERCO, INC.	JASON	PACL		402.488.9011
SILVERSTONE GROUP SOFTWARE TECHNOLOGY, INC.	M. SUE	SETTELL		402.323.2314
	STEVE	NARANS	*	402.964.5400
SOUTHEAST COMMUNITY COLLEGE	KATHERINE	TIMMINS	*	402.423.1440
	AMY	CHESLEY		402.437.2709
	MARY	CROOK	*	
	CAROL	GUSTAFSON		402.437.2507

<b>SOUTHEAST COMMUNITY COLLEGE (CON'T)</b>	TAMMIE	LANG	*	402.580.1715
	RON	SNYDER		402.437.2714
	SHELLY	TOLLE		402.761.8242
	LYNN	WILLEY		402.437.2622
<b>SPEEDWAY MOTORS</b>	KAY	SUDBECK		
	CATHY	MADDOX	*	402.323.3249
<b>ST MARYS COMMUNITY HOSPITAL</b>	CHARLENE	LANT	*	402.873.8902
<b>STAFFING SERVICES, INC</b>	DIANA	MARTINEZ		402.465.9060
<b>STATE FARM INSURANCE</b>	ABBE	MONTGOMERY		402.327.5224
	CHRISTINE	WISNIESKI		402.327.5123
	TAMARA	GREEN	*	402.327.5659
	LAURIE	GYHRA		402.327.5341
	CRESHA	HENRY	*	402.327.5217
	SARA	WHITE	*	402.327.5750
	GLENN	WILLIAMS		402.327.5216
	DARLA	ATKINSON		402.471.6348
	JOAN	CLARE	*	402.471.4779
<b>STATE OF NEBRASKA</b>	YVETTE	FRANK		402.471.1183
	TOM	HINDS		402.471.1173
	JENIFER	LAUTENSCHLAGER- DOHMEN	*	402.479.4346
	JENNIFER	MONROE	*	402.471.4121
	MARY	SHANAHAN	*	402.471.9240
	KATHY	VANDENBERG		402.471.2207
	REBECCA	FERGUSON	*	402.479.6402
	JENNY	GALL	*	402.466.5510
<b>STEPHENS &amp; SMITH CONSTRUCTION</b>	KIM	DOERR	*	402.421.5212
<b>STERLING NATIONAL CORPORATION</b>	TRACY	PLAUTZ		402.486.8522
<b>SYSCO LINCOLN</b>	JULIE	SINGH	*	402.486.8556
<b>TABITHA HEALTH CARE SERVICES</b>	LAURA	WILLIAMS		402.486.8544
<b>TC BOOTH MANAGEMENT RESOURCES</b>	THOMAS	BOOTH	*	402.434.3971
<b>TELEDYNE ISCO, INC</b>	DEANNA	SCHULDEIS		402.465.3724
	SHERYL	WRIGHT	*	402.465.3029
<b>TELESIS INC</b>	WAYNE	BOLES		402.434.5973

<b>TELESIS INC (CON'T)</b>	REBA	SCHAFER		402.434.5981
	ANGELA	TUCCI		402.434.5964
<b>TENNECO LINCOLN</b>	JANAE	LANT	*	402.476.2661
<b>THE AMBASSADOR LINCOLN</b>	LOIS	FISHER		402.484.4552
<b>THE CLARK ENERSEN PARTNERS</b>	PEGGY	MERKEL	*	402.477.9291
<b>TMCO, INC</b>	KENDAL	GARRISON	*	402.476.0013
<b>TRACTOR SUPPLY</b>	TRACY	WESELY	*	402.786.6107
	MELISSA	HYNES		402.786.6107
<b>TRICON INDUSTRIES</b>	TYRONE	CHATMAN		402.470.3311
	WENDY	LOWERY	*	402.470.3454
	YAN	YANG		402.470.3311
<b>UNICO GROUP, INC. UNION BANK &amp; TRUST COMPANY</b>	DUANA	FREEMAN		402.434.7253
	BRANDIE	BEALE		402.323.115
	DEBBIE	GRIFFIN	*	402.323.1193
	JASON	LAURITSEN	*	402.323.1867
	LISA	MOORE	*	402.323.1232
	CHAD	THIES		402.323.1664
	KIM	YOUNG		402.323.1213
	KIMBERLY	STEINER	*	402.486.2600
<b>UNION COLLEGE UNIVERSITY OF NEBRASKA FOUNDATION</b>	JENNIE	ERNEST		402.458.1220
	SARA	SKRETTA	*	402.458.1100
<b>UNIVERSITY OF NEBRASKA - LINCOLN</b>	GWENDOLYN	COMBS	*	402.472.6061
	WILLIAM	DULY		402.624.8086
	JAMES	FISCHER		402.472.3101
	SHERYL	GARTNER		402.472.7160
	CHRIS	GENGENBACH		402.472.8042
	CATHERINE	LUND		402.472.9333
	KELLI	SMITH		402.472.3145
	<b>USDA RURAL DEVELOPMENT</b>	SANDRA	GAUSE	*
<b>USDA/NRCS</b>	S JEAN	NIEMANN	*	402.437.4058
<b>VALMONT</b>	VANESSA	BROWN		402.359.6035
<b>VERIZON WIRELESS</b>	MARY	BURCHFIELD		402.473.6610
	JEAN	BYRNE	*	402.473.6613
	AMY	COX	*	402.473.6612
	SHARON	WADE	*	

<b>VERIZON WIRELESS (CON'T)</b>	DANIELLE	ZEMLICKA		402.473.6614
<b>WADDELL AND REED</b>	BRIAN	WILLET		402.484.7526
<b>WEDDLE PERFORMANCE GROUP</b>	JANE	WEDDLE		402.429.5224
<b>WELLS FARGO</b>	JILL	MILLER	*	402.434.4147
<b>WILLEKE FINANCIAL GROUP, LLC</b>	CRAIG	WILLEKE		402.483.6656
<b>WILLMAR ELECTRIC SERVICE</b>	MISTY	LAUER		402.464.1877
<b>WINDSTREAM</b>	LORI	ANDERSON	*	402.436.5322
<b>WOLFE SNOWDEN HURD LUERS &amp; AHL</b>	KATHY	WUDEL		402.474.1507
<b>WOODS &amp; AITKEN, LLP</b>	BOB	EVNEN		402.437.8518
	SHERRI	TOOHEY		402.437.8540
<b>WORKFORCE UNLIMITED CORP.</b>	KEVIN	JOCHUM		402.464.2900
<b>YMCA OF LINCOLN NEBRASKA</b>	MISTY	MUFF	*	402.434.9204

# **2011 SHRM Student Chapters**

---

## **UNIVERSITY OF NEBRASKA – LINCOLN**

**Advisor**

**DR. GWENDOLYN COMBS**

Assistant Professor

274 CBA

University of NE – Lincoln

Lincoln, NE 68588-0491

PH: 402.472.6061

FX: 402.472.5855

gcombs@unl.edu

---

---

## **DOANE COLLEGE**

**Advisor**

**TIMOTHY WIEDMAN**

Assistant Professor of

Management/HR

1014 Boswell Avenue

Crete, NE 68333-2430

PH: 402.826.8537

FX: 402.826.8278

timothy.wiedman@doane.edu

---

---

## **NEBRASKA WESLEYAN UNIVERSITY**

**Advisor**

**LARRY HUGHES**

Assistant Professor

NE Wesleyan University

5000 St. Paul Ave.

Lincoln, NE 68504

PH: 402.465.2204

lhughes@nebrwesleyan.edu



## PAST PRESIDENTS

---

1953-54	William F. Stenton	1980-81	Sally Schneider
1954-55	Walter F. Roberts (Deceased)	1981-82	Reid E. Devoe
1955-56	R. "Max" Peterson	1982-83	Patricia A. Kant
1956-57	Victor Seymour (Deceased)	1983-84	Bob Hanrath
1957-58	Richard M. Bourne (Deceased)	1984-85	Neal Westphal
1958-59	R. D. Andersen	1985-86	Connie Soucie
1959-60	W. "Tom" Tompkins	1986-87	Chriss Lloyd
1960-61	Ann Scott	1987-88	Linda Shafer
1961-62	Joe Hartley	1988-89	Kent Mattson
1962-63	Don Fahleson (Deceased)	1989-90	Lovie Magruder
1963-64	Dave Hendricks (Deceased)	1990-91	Doug McDaniel
1964-65	James E. Geist	1991-92	Cheryl Vavra
1965-66	Robert L. Murphy	1992	Jane Goertzen
1966-67	John D. Beecham (Deceased)	1993	Dennis Seaman
1967-68	Earl R. Fell	1994	Nancy Conway
1968-69	Walter J. Mitchell (Deceased)	1995	Judy Backhaus
1969-70	William M. Cords (Deceased)	1996	Chris Matousek
1970-71	Joseph R. Ruschetti	1997	Peggy Storm
1971-72	Stuart A. Maseman	1998	Rebecca Ferguson
1972-73	Jerry L. Sellentin	1999	Mary Crook
1973-74	Harvey Schwartz	2000	Laurie Kortum
1974-75	Ray Oepping	2001	Trish Reimers
1975-76	Georgia Schmitt	2002	Toni Beyer
1976-77	James P. Spangler	2003	Ruth Jones
1977-78	David L. Bornholdt	2004	Chris Gantz
1978-79	Linda G. Larsen	2005	Michele Spadt
1979-80	Dick Whitcomb	2006	Cindy Mefford
		2007	Carmen Wiles
		2008-09	Cathy Maddox

## HONORARY LIFE MEMBERSHIPS

---

Dean G. Cooper (Retired)	Suzanne Owen (Retired)
Ellen Deming (Retired)	Robert Walgren
Howard M. Doty (Retired)	Sally Beck (Retired)
Leonard D. Focht (Retired)	Neal Westphal (Retired)
Joe Hartley (Retired)	Cary Thorp, Jr., PhD, SPHR (Retired)
Laverne Rezabek (Retired)	Sally Schneider (Retired)
Frank Selk (Retired)	Tom Booth (Retired)
Mary Wilson (Retired)	Jerry Sellentin
Reid Devoe (Retired)	Thomas Alexander

# **CONSTITUTION AND BYLAWS**

## **of the**

## **LINCOLN HUMAN RESOURCE MANAGEMENT ASSOCIATION**

### **ARTICLE I - Name and Affiliation**

Section I.I: Name. The name of the Corporation is the Lincoln Human Resource Management Association (hereinafter the "Association or Chapter"). To avoid potential confusion, the Chapter will refer to itself as Lincoln Human Resource Management Association and not as SHRM or the Society for Human Resource Management.

Section I.II: Affiliation. The Chapter is affiliated with the Society for Human Resource Management (herein referred to as "SHRM").

Section I.III: Relationships. The Chapter is a separate legal entity from SHRM. It shall not be deemed to be an agency or instrumentality of SHRM or of a State Council, and SHRM shall not be deemed to be an agency or instrumentality of the Chapter. The Chapter shall not hold itself out to the public as an agent of SHRM without express written consent of SHRM. The Chapter shall not contract in the name of SHRM without the express written consent of SHRM.

### **ARTICLE II - PURPOSE**

The purpose of the Association is: To provide for the interchange of ideas, experiences and methods concerning the development, ethics and acquaintanceship among those involved in professional human resource management.

### **ARTICLE III - MEMBERSHIP**

Section III.I: Qualifications for Membership. The qualifications for membership in the Association shall be stated in Sections III.II, III.III, III.IV and III.XIV of this Article.

Section III.II: Regular (1) As a practitioner whose primary duties fall within the various functional areas of HR management, including but not limited to: compensation, benefits, employment, employee or organizational development, employee relations and management practices, workers' compensation, human resource information systems, safety, and employee assistance programs (EAP), but not including those exclusively providing administrative services to these functional areas; or (2) as a university or college faculty member responsible for instructing students in HR management or serving as advisor to a student SHRM chapter, or (3) the applicant is a Professional or General member of SHRM.

Section III.III: Associate — Individuals who do not meet any of the regular membership categories but have a bona fide interest in HR management. An associate member shall have no vote in the affairs of the Association.

Section III.IV: Honorary Life Membership — Limited to any member who is in good standing at the time of his/her retirement from active work. Honorary life membership shall be contingent on a majority vote of the Executive Committee. An honorary life member shall have no vote in the affairs of the Association.

Section III.V: Dues. Annual membership dues shall be established for the next year by the Board of Directors prior to the mailing of renewal notices. Dues shall be payable by December 31 of each year for membership in the following year. Membership dues of new members paid after October 1 will carry forward.

# CONSTITUTION AND BYLAWS

Section III.V.i: Executive Committee Members – no membership fees for the year in which they serve on the Board as long as they complete the fiscal year.

Section III.VI: SHRM Membership. The Association encourages membership in the Society for Human Resource Management (SHRM). Such membership, however, will be at the option of the individual member.

Section III.VI.i: Membership must be maintained at 30% national SHRM membership or 10 SHRM members whichever is greater.

Section III.VII: Application for Membership. Applications for membership shall be filed with the Membership Chairperson. Before acceptance, such applications shall be reviewed and approved by the Membership Chairperson.

Section III.VIII: Individual Membership. All memberships in the Association shall be individual memberships. Firm or agency memberships are not allowed. Memberships may not be transferred from one individual to another in the same firm or agency.

Section III.IX: Updates. It shall be the member's responsibility to notify the Association's Administrative Assistant of the new address when leaving a firm or agency.

Section III.X: Forfeiture. Any member whose connection with the Association is severed, shall forfeit all interest in any funds or property belonging to the Association.

Section III.XI: Termination of Membership. Membership in the Association may be terminated for cause by unanimous vote of the Executive Committee. Prior to such vote, however, the member will be notified in writing of why such action is being considered and the member will be allowed to give reason why his/her membership should not be revoked. Ethical violations or other sensitive issues will be handled at the discretion of the Executive Board.

Section III.XII: Equal Opportunity. No action affecting the membership of applicants nor the status of any member shall be taken on the basis of race, color, religion, sex, age, national origins, disability, marital status, veterans' status, or receipt of public assistance.

Section III.XIII: Indemnification and Hold Harmless. The Association shall indemnify and hold harmless each director and each officer of the Association against and from all loss, cost, and reasonable expenses hereafter incurred by such director or officer in the payment settlement, or defense of any claim, suit or proceeding brought against such person because of any action alleged to have been taken or omitted by such director or officer. Such indemnification shall not apply with respect to any matter as to which such director or officer shall be determined by decree of court of competent jurisdiction to be liable for willful misconduct.

Section III.XIV: Student Chapter Members. Recognizing the need to promote professional development, the Association supports the purpose and activities of Student Chapters of SHRM. In addition to providing financial and other resource support to encourage the growth and development of these organizations, the Association will encourage student chapter members to attend all Association activities without charge except for meals and materials. Student chapter members will not be entitled to voting privileges on Association matters.

# CONSTITUTION AND BYLAWS

Section III.XV: Voting. Each regular member in good standing shall be entitled to one vote on each matter submitted to a vote of the members. Associate, Honorary and Student members do not have a right to vote.

## ARTICLE IV - COMMITTEES

Section IV.I: Executive Committee. The Executive Committee shall consist of the officers of the Association and the immediate past president. The Executive Committee shall have the power and authority to act in the general management of the affairs of the Association. The Executive Committee, alone, shall have the power and authority to enter into contracts on behalf of the association. Four members of the Executive Committee shall constitute a quorum for the purpose of conducting the business thereof.

Section IV.II: Membership Committee. There shall be a Membership Committee consisting of at least three members appointed by the President or committee chair, whose duty shall be to solicit memberships, investigate all prospective members, make recommendations to the Executive Committee in connection with membership, and publish a directory. This committee also promotes membership in SHRM.

Section IV.III: Program Committee. There shall be a Program Committee consisting of at least three members appointed by the President or committee chair, whose duty shall be to provide programs and correspond with speakers for all regular or special meetings of the Association.

Section IV.IV: Diversity Committee. There shall be a Diversity Committee consisting of at least three members appointed by the President or committee chair, whose duty shall be to raise awareness, understanding, and provide education on diversity. The committee also submits articles for the Association's newsletter and provides at least one diversity workshop annually.

Section IV.V: Auditing Committee. There shall be an Auditing Committee consisting of at least three members appointed by the President or incoming Treasurer whose duty shall be to make an annual audit of the books of the Association and report at the November meeting unless audited by a professional outside organization.

Section IV.VI: Nominating Committee. There shall be a Nominating Committee consisting of the Immediate Past President, President-Elect, and at least three additional members (none of whom shall be members of the Executive Committee) appointed by the President-Elect prior to the September meeting who shall present the names of candidates for each office to the Executive Committee. The nominations shall be presented to the Membership with the notice of the annual business meeting. At the annual business meeting, nominations may be made from the floor by any regular member in good standing.

Section IV.VII: Registration Committee. There shall be a Registration Committee consisting of at least three members appointed by the President or committee chair whose duty shall be to accept reservations, arrange for Registration at meetings and ascertaining the number of members and guests who will be attending said meetings.

Section IV.VIII: Government Relations Committee. There shall be a Government Relations Committee consisting of at least five members appointed by the President or President-Elect

# **CONSTITUTION AND BYLAWS**

whose duty shall be to monitor all proposed federal, state and local legislation and regulatory activity affecting the conduct of Human Resource pursuits and to recommend action to the Executive Committee. This committee also promotes involvement of the Association membership in state and national grassroots efforts.

Section IV.IX: Workforce Readiness Committee. There shall be Workforce Readiness committee consisting of at least three members appointed by the President or committee chair whose duties shall be to raise awareness, provide education and programming on Workforce Readiness. The committee will also conduct presentations, coordinate activities with affiliated student chapters and other activities to promote Workforce Readiness in the community.

Section IV.X: College Relations Committee. There shall be College Relations committee consisting of at least three members appointed by the President or committee chair whose duties shall be to manage the scholarship program, internship program and college outreach efforts.

Section IV.XI: Special Committees. Special Committees may be appointed from time to time at the discretion of the President or the Executive Committee.

Section IV.XII: Additional duties may be assigned to the above-mentioned committees as deemed necessary and at the discretion of the President.

## **ARTICLE V - ELECTION OF OFFICERS**

Section V.I: Election of officers for the ensuing calendar year will be voted in on or before the regular monthly meeting in November of each year. Officers shall be elected by a majority of the regular members present at the annual business meeting as long as a quorum exists and shall serve for one year or until their successors are elected and qualified. The term of the office shall be from January 1 through December 31 of the following year.

Section V.II: The Executive Committee shall fill any vacancies occurring in an office between elections.

## **ARTICLE VI - OFFICERS**

Section VI.I: The Officers (Executive Committee) of the Association shall consist of a President, Immediate Past President, President-Elect/Government Affairs Chair, Programs Chair, Membership Chair, Treasurer/Registration Chair, Secretary/Publicity Chair, Diversity Chair, Workforce Readiness Chair, Certification Chair SHRM Foundation Chair and College Relations Chair. An officer (executive committee) must be currently employed in the field of Human Resources. Per SHRM By-laws, the President must be a current member in good standing of SHRM throughout the duration of his/her term of office. The chapter also requires that each Executive committee member be a current member in good standing of SHRM throughout the duration of his/her term of office.

Section VI.II: The Officers of the Association shall perform the duties pertaining to their respective offices. The President is the Chief Executive Officer of the Association. He/she shall preside over all meetings of the Association and the Executive Committee and in his/her absence the President-Elect shall officiate. The President shall serve a two year term.

Section VI.III: The Immediate Past President shall serve as an advisory council and will serve as a member of the Program Committee. The immediate Past President shall carry out any other duties

# CONSTITUTION AND BYLAWS

pertaining to his/her office and at the direction of the President or a majority of the Executive Committee. The Immediate Past President shall serve a consecutive two year term.

Section VI.IV: The President-Elect/Government Affairs Chair shall Chair the Government Affairs Committee and report its actions to the Executive Committee. The President-Elect/Government Relations Chair shall perform the duties of the President in the absence of the President. The President-Elect/Government Affairs Chair shall carry out any other duties pertaining to his/her office and at the direction of the President or a majority of the Executive Committee.

President-Elect/Government Affairs Chair shall serve as President following their two year term. A member that has previously served as an officer, other than President or President-Elect/Government Affairs Chair, is eligible to serve as the incoming President-Elect/Government Affairs Chair. The President-Elect shall serve a two year term.

Section VI.V: The Programs Chairperson shall Chair the Programs Committee and report its actions to the Executive Committee. The Programs Chairperson shall carry out any other duties pertaining to his/her office and at the direction of the President or a majority of the Executive Committee.

Section VI.VI: The Membership Chairperson shall chair the Membership Committee and report its actions to the Executive Committee. The Membership Chairperson shall distribute a directory of all paid members in good standing at the April meeting. The Membership Chairperson shall carry out any other duties pertaining to his/her office and at the direction of the President or a majority of the Executive Committee.

Section VI.VII: The Diversity Chairperson shall Chair the Diversity Committee and report its actions to the Executive Committee. The Diversity Chairperson shall provide education on diversity. The Diversity Chairperson shall carry out any other duties pertaining to his/her office and at the direction of the President or a majority of the Executive Committee.

Section VI.VIII: The Workforce Readiness Chairperson shall chair the Workforce Readiness Committee and report its action to the Executive Committee. The Workforce Readiness Chairperson shall establish and promote activities related to workforce readiness. The Workforce Readiness Chairperson shall carry out any other duties pertaining to his/her office and at the direction of the President or a majority of the Executive Committee.

Section VI.IX: The Secretary/Publicity Chair shall keep a report and an accurate record of all regular and special meetings of the Association and the Executive Committee. It shall be the responsibility of the Secretary to publish a monthly Association newsletter. The Secretary is responsible for providing news releases for publicity purposes. The Secretary shall carry out any other duties pertaining to his/her office and at the direction of the President or a majority of the Executive Committee.

Section VI.X: The Treasurer/Registration Chair shall receive all monies for the Association and disburse its funds upon the approval of the President or Executive Committee. He/she shall make an annual report of all receipts and disbursements at the Annual Business Meeting of the Association and at such other times as the Executive Committee may require. The Treasurer shall be bonded as required by the Executive Committee. The Treasurer shall be the liaison

# **CONSTITUTION AND BYLAWS**

officer for the Executive Committee with the Registration Committee. The Treasurer shall carry out any other duties pertaining to his/her office at the direction of the President or a majority of the Executive Committee. The Treasurer/Registration shall serve a two year term.

Section VI.XI: College Relations Chair. The College Relations Chair shall manage the scholarship program, internship program and college outreach efforts.

Section VI.XII: Certification Chair. The Certification Chair shall promote HR Certification Institute certification and recertification to members.

Section VI.XIII: SHRM Foundation Chair. The SHRM Foundation Chair shall create an awareness of the function of the SHRM Foundation and how it promotes education and research in the HR profession. The Chair solicits donations from membership.

Section VI.XIV: Removal of Director and Officer. Any director or officer may be removed from office, with or without cause, upon an affirmative vote of two-thirds of the entire Board of Directors at a duly constituted Board of Directors meeting.

## **ARTICLE VII – MEMBER MEETINGS**

Section VII.I: Regular meetings of the Association shall be held monthly, with a minimum of six (6) meetings per year. The Executive Committee shall set the date of all regular or special meetings, entertainment and plant or business excursions.

Section VII.II: All regular meetings will be open to members of the Association, their guests, and the members of the Student SHRM chapters unless otherwise announced.

Section VII.III: Annual Meeting. Shall be held in November of each year.

Section VII.IV: Quorum. Members holding one-tenth of the votes entitled to be cast, represented in person or by conference call, shall constitute a quorum.

## **ARTICLE VIII – STATEMENT OF ETHICS**

The Lincoln Human Resource Management Association (LHRMA) adopts SHRM's Code of Ethics for members of the Association in order to promote and maintain the highest standards among its members. Each member shall honor, respect, and support the purpose of this Chapter and SHRM.

Section VIII.I: The Chapter shall not be represented as advocating or endorsing any issue unless approved by the Board of Directors.

Section VIII.II: No member shall actively solicit business from any other member at Association meetings or through the use of information provided to him/her as a member of the Chapter without prior approval from the Board of Directors.

Section VIII.III: The Chapter Membership Directory contains proprietary information and must not be used for solicitation purposes. It must not be disclosed, reproduced, distributed to, or used by any

# **CONSTITUTION AND BYLAWS**

individual, organization, or entity that is not affiliated with LHRMA without the prior express written consent of the Board of Directors/Officers.

## **ARTICLE IX – AMENDMENTS**

The By-Laws may be amended by a majority vote of the members present at any meeting at which a quorum exists and in which required notice has been met, provided that no such amendment shall be effective unless and until approved by the SHRM President/CEO or his/her designee as being in furtherance of the purposes of the purposes of SHRM and not in conflict with SHRM bylaws. Any motion to amend the bylaws shall clearly state that it is not effective unless and until approved by the SHRM President/CEO or his/her designee.

The By-Laws of the Association may be amended by written recommendation being submitted by any member or group of members. The written recommendation will be submitted to the Executive Committee, who will appoint a committee to consider the recommendation. The appointed committee will consider the recommendation and properly formulate it into the form of an amendment. No such amendment shall be effective unless and until approved by the SHRM President/CEO or his/her designee as being in furtherance of the purposes of the SHRM and not in conflict with SHRM bylaws. Any motion to amend the bylaws shall clearly state that it is not effective unless and until approved by the SHRM President/CEO or his/her designee. The approved proposed amendment will be published for all members prior to the next monthly business meeting. Upon a two-thirds (2/3) vote of the members present at the monthly meeting, at which a quorum exists, the amendment will be approved.

## **ARTICLE X - FISCAL YEAR**

The fiscal year of the Association shall begin on January 1 each year and end on December 31 of the same year.

## **ARTICLE XI – DISSOLUTION**

In the event of the chapter's dissolution, the remaining monies in the Treasury, after chapter expenses have been paid, will be contributed to the SHRM Foundation.

## **ARTICLE XII – WITHDRAWAL OF AFFILIATED CHAPTER STATUS**

Affiliated chapter status may be withdrawn by the President/CEO of SHRM or his/her designee as a representative of the SHRM Board of Directors upon finding that the activities of the Chapter are inconsistent with or contrary to the best interests of SHRM. Prior to withdrawal of such status, the Chapter shall have an opportunity to review a written statement of the reasons for such proposed withdrawal and an opportunity to provide the SHRM Board of Directors with a written response for such a proposal within a thirty (30) day period. In addition, when the Chapter fails to maintain the required affiliation standards as set forth by the SHRM Board of Directors, it is subject to immediate disaffiliation by SHRM. After withdrawal of Chapter status, the SHRM Board of Directors may cause a new Chapter to be created, or, with the consent of the President/CEO of SHRM and the consent of the body which has had Chapter status withdrawn, may re-confer Chapter status upon such body.

## **ARTICLE XIII – TERMS USED**

As used in these Bylaws, feminine or neuter pronouns shall be substituted for those of the masculine form, and the plurals shall be substituted for the singular number in any place where the context may require such substitution or substitutions.



# **CONSTITUTION AND BYLAWS**

Dated: May 9, 1989

Dated: June 9, 1992

Dated: November 12, 1996

Dated: November 10, 1998

Date: November 12, 2002

Date: November 11, 2003

Date: November 14, 2006

Date: July 9, 2009

**LINCOLN HUMAN RESOURCE  
MANAGEMENT ASSOCIATION**

P.O. Box 81066

Lincoln, Nebraska 68501-1066

[www.lincolnhhr.org](http://www.lincolnhhr.org)

This directory contains proprietary information and must not be used for solicitation purposes. It must not be disclosed, reproduced, distributed to, or used by any individual, organization, or entity that is not affiliated with LHRMA without the prior express written consent of LHRMA.